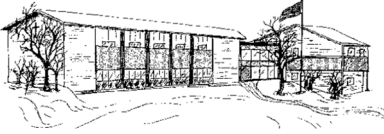


# St. Andrew School Newsletter

January 23, 2018

P.O. Box 231 Helena, Montana 59624 1900 Flowerree Street Helena, Montana 59601  
406- 449-3201(Phone) 406-449-0129 (Fax)

[www.standrewschool.org](http://www.standrewschool.org)

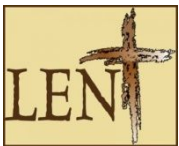


## Looking Ahead:

Jan 29-Feb 2	Catholic Schools Week (See schedule below)
Feb 1	Mass at 11:00/ Family picnic in the gym afterwards
Feb 2	Ski day, all grades
Feb 8	KINDERGARTEN INTERVIEWS
Feb 8	HS Basketball game in Lincoln has been <b>cancelled</b>
Feb 14	<b>Ash Wednesday, Late start 8:15</b>
Feb 15	Spelling Bee
Feb 16	Stations of the Cross, 2:40
Feb 19	Early release, 11:35, teachers' meeting
Feb 23	Stations of the Cross, 2:40
Feb 24	Emerald Isle Auction
Mar 2	Ski day, all grades
Mar 5-9	SPRING BREAK

## Pick-up lane in the Parking Lot

Please remember that if you must come into the school, you need to park in one of the regular parking spaces. **Do not leave your vehicle in the pick-up lane!**



*Families are welcome to join the students and faculty at Stations of the Cross on Fridays during Lent,*

*Feb 16<sup>th</sup>, Feb 23<sup>rd</sup>, Mar 16, and Mar 23 at 2:40 in the gym.*

## Expected School-wide Learning Results

St. Andrew students are: **VERO-** Virtuous Citizens **E**nthusiastic Catholics **R**esourceful Learners **O**pen Witnesses

PLEASE REMEMBER THAT YOUR DONATION TO ST. ANDREW SCHOOL IS TAX DEDUCTIBLE.

## Catholic Schools Week

Parents are welcome to attend **Mass on Thursday, Feb. 1 in the school gym at 11:00 am** and bring a picnic lunch to eat with their children after Mass. The Mass will be organized by the 6<sup>th</sup> grade.

We will be celebrating Catholic Schools' Week Jan. 29-Feb.2<sup>rd</sup>.

The theme of the week is "**Catholic Schools: Learn. Serve. Lead. Succeed.**" Each day will be dedicated to a group of people who make Catholic education possible. Students will learn about the saints who were instrumental in the growth of Catholic education.

	<b>Dedicated to:</b>	<b>Saints:</b>	<b>What's happening?</b>
Monday 1/29	Students	St. Thomas Aquinas	Treats for students
Tuesday 1/30	Teachers, Staff and Volunteers	John Baptiste de LaSalle	Tip your hat to teachers and staff: Students may wear hats to school. On Tuesday a lunch will be provided for the teachers to show appreciation for their dedication.
Wednesday 1/31	Community and Church	Katherine Drexel	Gr. K-7 Crazy Sock Day. This is the day dedicated to the community. Students will be doing community service projects.
Thursday 2/1	Family	Elizabeth Ann Seton	Dedicated to the role the parents play in Catholic Education. <b>Mass will be celebrated at 11:00.</b> Bring a picnic lunch to share with your child(ren) in the gym.
Friday 2/2	SKI DAY		

## SKI DAY NOTE

### Expected School-wide Learning Results

**St. Andrew students are: VERO-** Virtuous Citizens    **E**nthusiastic Catholics    **R**esourceful Learners    **O**pen Witnesses

PLEASE REMEMBER THAT YOUR DONATION TO ST. ANDREW SCHOOL IS TAX DEDUCTIBLE.

If you have signed up to ski on Friday but for some reason you are unable to go, please let us know by 3:00 on Wednesday. If you must cancel after that time, please call the ski hill so they know not to set up your equipment.

- **Great Divide WILL charge \$5 for rentals that are not picked up and not cancelled by 10:00am on the ski day**
- All students in grades 3-12 are allowed to go to the ski hill without an adult accompanying them. Students in grades K-2 need to be accompanied by a parent or responsible adult that will stay on the hill with them for the day.
- Some of the teachers may also be skiing. It is not, however, their job to take care of your child. If you feel your child needs supervision and is in grades 3-12, you must have an adult at the ski area to take care of their needs. Lunch will not be provided, so everyone is responsible for their own meal. You may eat at the lodge or bring your own lunch.
- It is the parents' responsibility to transport their children to and from the ski hill. St. Andrew School will not be providing transportation. The students should be at the ski hill between 9:00 and 9:15 am and will need to be picked up at 3:00 pm.
- Regarding the "Bunny Hill/Backyard." **Anyone who is wearing skis and is on the snow must pay the access fee whether you will be using the lift or not—this also goes for anyone with a child wearing skis who will be staying in the "Backyard" for the whole day.**

### **8<sup>th</sup> grade students' Auction Project**

8<sup>th</sup> grade students will start work on their fly-fishing rod this Friday and Saturday at 10 am at Cross Currents Fly Shop. Students may sign up for days that they wish to attend on the sheet on Mrs. Matich's door.

326 N Jackson St

### **7<sup>th</sup> and 8<sup>th</sup> grade students**

If you are a student in grade 7 or 8 who would like to earn money babysitting on Auction Night, please let the office know. Many parents would like to attend or work the auction and need reliable sitters. (The high school students will be working at the auction.)

### **6<sup>th</sup> grade parents**

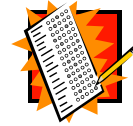
The State of Montana requires children about to enter 7<sup>th</sup> grade to have received a Tdap booster before. Your doctor's office can fax records to 449-0129. It is not too early to get this scheduled so that doctors' offices are able to schedule you in a timely manner. Please don't wait until school starts in August.

### **Expected School-wide Learning Results**

St. Andrew students are: **VERO**- Virtuous Citizens Enthusiastic Catholics Resourceful Learners Open Witnesses

PLEASE REMEMBER THAT YOUR DONATION TO ST. ANDREW SCHOOL IS TAX DEDUCTIBLE.

# Attention Juniors!



## When's the Best Time to Take the SAT or ACT?

The SAT and other College Board tests are offered several times a year. Most students take the SAT or ACT for the first time during the spring of their junior year and a second time during the fall of their senior year.

### SAT Test Date:

May 5  
June 2

\*No SAT subject tests

### Registration Deadline:

April 6  
May 3

### ACT Test Date:

Feb 10  
Apr 14  
June 4  
July 14

### Registration Deadline:

Jan 12  
Mar 9  
May 4  
June 15

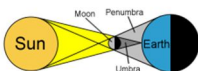
## Senior Class Graduation Information

- The date for the senior class graduation is Friday, May 25, 2018  
Graduation Announcements: Please let Denise Hampton know whether or not you would like to order school graduation announcements. Please see the email sent to the parents for more information.
- Senior Pictures are due February 15. Pictures must be 2¼ x 3". Orientation of pictures must be portrait not landscape.

### Expected School-wide Learning Results

St. Andrew students are: **VERO**- Virtuous Citizens Enthusiastic Catholics Resourceful Learners Open Witnesses

PLEASE REMEMBER THAT YOUR DONATION TO ST. ANDREW SCHOOL IS TAX DEDUCTIBLE.



**Wanted:** photos of you and your family taken during the solar eclipse for a school photo album for an auction project.  
 Please email to Mrs. Christi Buffington: [cbuffington@standrewschool.org](mailto:cbuffington@standrewschool.org). Thanks for your help.

## Upcoming Games

Jr. High Girls Basketball:	
Thursday, Feb 1, at Clancy 4:00 Friday, Feb 2 at HOME vs Lincoln, 6:30 Thursday, Feb 8 at HOME vs Homeschool, 5:30	Tuesday, Feb 13 at HOME vs Helena Christian, 4:00 Thursday, Feb 15 at HOME vs Homeschool, 5:30 Wednesday, Feb 21 at Boulder, 4:00 Friday, Feb 23 at Montana City, 4:00
HS Girls Basketball:	
Thursday, Feb 8 at Lincoln, 5:30	Thursday, Feb 15 at Salvation Army vs GF Foothills, 4:00
HS Boys Basketball:	
Thursday, Feb 8 at Salvation Army 5:30 Thursday, Feb 12 at Salvation Army. 5:30	Thursday, Feb 15 HOME vs GF Foothills, 5:30

**Please support our teams!**

**VIRTUS “GRADUATES”**, PLEASE REMEMBER TO KEEP YOUR VIRTUS STATUS UPDATED EVERY MONTH ON-LINE.



## Round-up

New families are calling the school to enroll their children in Kindergarten for next fall. If you have a child that will be five years of age by September 1<sup>st</sup> please call the office to schedule your appointment. Families, it is **very important** that we be made aware of younger siblings entering kindergarten as we already have **20** inquiries/applications! Although existing families have first priority, your deposit secures your spot.

### Expected School-wide Learning Results

**St. Andrew students are: VERO- Virtuous Citizens Enthusiastic Catholics Resourceful Learners Open Witnesses**

PLEASE REMEMBER THAT YOUR DONATION TO ST. ANDREW SCHOOL IS TAX DEDUCTIBLE.



# *Emerald Isle Auction 2018*



## **High Rollers' Auction!**

Winner will choose one **LIVE** Auction item before the auction begins.  
(Some exclusions apply)

Auction items are valued up to \$6,000!

**\$100 per ticket/ 100 tickets sold**

Tickets are currently available in the auction office. Purchase now!  
(Credit cards will not be accepted due to MT gambling laws.)

Drawing will be held on **February 24, 2018** at the Emerald Isle Auction, St. Andrew Gym  
Need not be present to win; however, each ticket holder must submit the name of the LIVE  
auction item they want before 6:30 pm, February, 24, 2018.

Live auction items will begin to be posted online January 19, 2018. Visit  
[www.standrewschool.org](http://www.standrewschool.org).

Come to our **PREVIEW** night on Thursday, February 22, 2018 from 4:00-6:00 pm.  
All items will be on display!

## **BIG DISCOUNT ON DINNER TICKETS LAST DAY IS TOMORROW**

**Emerald Isle Dinner tickets** may be purchased for \$40 each instead of \$50 through January 31<sup>st</sup>. This is our biggest event of the year and should not be missed. It is a great opportunity to experience the generous support we receive from the community and share a wonderful evening with friends. Visit the Auction Room to purchase tickets today! Discounted tickets are limited to immediate family of students.

Please pick up **Auction posters** from the school office and distribute to businesses. This is great advertising for the school. Help us get the word out by taking posters to some of the businesses you frequent. If there are parents willing to take several posters to distribute to many businesses, it would be much appreciated. This would count toward your PIP points.

## **Expected School-wide Learning Results**

**St. Andrew students are: VERO- Virtuous Citizens Enthusiastic Catholics Resourceful Learners Open Witnesses**

**PLEASE REMEMBER THAT YOUR DONATION TO ST. ANDREW SCHOOL IS TAX DEDUCTIBLE.**

# How Can I Sell My Raffle Tickets?

We have the opportunity of selling raffle tickets at local establishments. We are so grateful that we are allowed to do this! If you have trouble selling tickets to family and friends, please make sure you sign up for one or more of the spots listed later in this newsletter. All families are required to sell two booklets of tickets or they will be charged the \$200.

You can also obtain more tickets in the Auction Office during school hours.

Raffle tickets are due to the office by 2/16 unless other arrangements are made ahead of time. Please turn in ticket books and money as you sell them.

**Prizes** for selling the most raffle tickets - this is a family event

First prize is one annual fee (\$250) waived.

Second prize is one half of an annual fee (\$125) waived.

Third prize is a \$50 gift certificate.

Fourth prize is a \$25 gift certificate.

Fifth prize is a \$10 gift certificate.

**Sign up with the school office to sell tickets at one of the locations listed below.**

**You just might win one of the prizes listed above!**

## Carroll BBall Games

Dates:	Women's 5:30 PM	Men's 7:30 PM
Saturday, February 3rd		

## Van's Thriftway

Set up by Deli and bring your own table and sign. Call Sarah at 442-8645 the Friday before the time you have signed up for. It would be great if the family that is signed up first for the day would coordinate so that we don't overwhelm Van's.

Dates:	9:00 AM-11:00 AM	11:00 AM-1:00 PM	1:00 PM-3:00 PM
Saturday, February 10th			
Sunday, February 11th			
Saturday, February 17th			
Sunday, February 18th			

## Super 1

Set up by front doors and bring your own table and sign. Call Lenny or Joe at 442-2348 the Friday before the time you have signed up for. It would be great if the family that is signed up first for the day would coordinate so that we don't overwhelm Super 1.

Dates:	9:00 AM-11:00 AM	11:00 AM-1:00 PM	1:00 PM-3:00 PM
Sunday, February 4th			
Sunday, February 18th			

## Expected School-wide Learning Results

**St. Andrew students are: VERO- Virtuous Citizens Enthusiastic Catholics Resourceful Learners Open Witnesses**

**PLEASE REMEMBER THAT YOUR DONATION TO ST. ANDREW SCHOOL IS TAX DEDUCTIBLE.**

**Chair and Co-Chair positions** still need to be filled to make this auction a success. Please grab your nearest parent friend and sign them (and yourself) up! Call Deirdre at the school for more information.

We are looking for items for an "As Seen on TV" section for the auction. If you have a favorite item or something catches your eye, your donation would be appreciated.

### **ATTENTION: MUSICAL STUDENTS & VIDEO EDITORS**

Calling those with musical talent to be featured in a video on the preview night of the auction.

We would like to showcase our students playing an instrument or singing (individuals or groups). We are also looking for students to film and edit the performances into a feed that may be played in a continuous loop. If there are prerecorded performances from the past year, those will be accepted as well. Please limit each performance to 5 minutes.

A Facebook event has been created for the auction. Please share and help spread the word.

### **Expected School-wide Learning Results**

**St. Andrew students are: VERO- Virtuous Citizens Enthusiastic Catholics Resourceful Learners Open Witnesses**

**PLEASE REMEMBER THAT YOUR DONATION TO ST. ANDREW SCHOOL IS TAX DEDUCTIBLE.**



## From the Principal

Dear Parents,

Many of you ask me how you can help the school. I am **so appreciative** of your care and concern for the future of St. Andrew! I know how important it is to you that the school continues.

At this time of year, we are reaching out and asking that you see how you can help with the auction. As you may know, tuition covers a little more than 75% of the cost of educating each of your children. We have to do what we can to make up the rest. The auction is our most important fundraiser.

Here are ways you can help us pay for your child's education while making this one of the most popular auctions in Helena, while

### How Can I help with Yellow Procurement Cards?

- Come into the office and take yellow cards. Go to these businesses and ask for an item. They have given before, so they usually agree to give again.
- Turn the card into the auction office with a description of the item and a contact number by January 31<sup>st</sup>.
- If you prefer to be a pick-up person, you can come get the cards and go pick up the item. (Items must be in by February 9 unless the item is perishable.)

### What can I, as a parent, give to the auction?

- Our parents have many talents and resources. In past years, some have put together various themed baskets for the auction. Can you think of one that you might be able to pull together?
- Our parents have a variety of talents. Do you give lessons? Can you teach a class on woodworking, offer to bake, or clean or....? Let us know!
- Do you have a timeshare, condos and/or lake house? Do you know someone who does? Would you be willing to give to the school by donating a stay at one of these? We are putting together live packages around various destinations and would love to have more getaway options. These are very popular at the auction!

### What else can I do?

- Classroom projects are well underway. Ask your teacher if you can donate an item to fill out the project with related items.
- Sign up to sell raffle tickets at nearby stores and churches.
- Buy your dinner tickets early for the auction and invite your friends.
- Call the auction office here at school and ask Deirdre Teodosio what you can do to volunteer. There are still chair/co-chair positions available and many other side jobs to be done.
- Pick up auction posters in the office and plaster them around the city!
- Last, but certainly not least, PRAY, PRAY, PRAY for our school's success!

Thanks so much for all your efforts!

Donna Smillie

### Expected School-wide Learning Results

St. Andrew students are: **VERO**- Virtuous Citizens **E**nthusiastic Catholics **R**esourceful Learners **O**pen Witnesses

PLEASE REMEMBER THAT YOUR DONATION TO ST. ANDREW SCHOOL IS TAX DEDUCTIBLE.