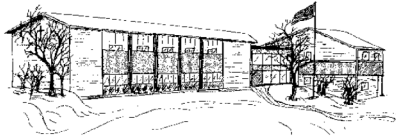


St. Andrew School Newsletter



1900 Floweree St.
P.O. Box 231
Helena, MT 59601

Phone:
(406)449-3201

Fax:
(406)449-0129

E-mail:
standrew@standrewschool.org
Vitam Impendere Vero



Expected School-wide Learning Results:

St. Andrew students are:

Virtuous Citizens Enthusiastic Catholics Resourceful Learners Open Witnesses

Looking Ahead:

Oct. 11, 2016

Oct. 17	Picture Day
Oct. 19	PSAT
Oct. 20-21	No School – Professional Days
Oct. 27	Taco John's fundraiser
Oct. 28	End of quarter
Oct. 31	Fall Fest
Nov. 2	Report Cards
Nov. 3	Adoption Day Ceremony at the State Capitol
Nov. 10	Half day, 11:45 dismissal, teacher meetings
Nov. 30	Feast of St. Andrew, Mass at 10:00

Ongoing Weekly Extracurricular Activities:

Monday	Homework Club 3:00-4:15
Tuesday	Homework Club 3:00-4:15 HS Boys Basketball practice 3:00-5:00 Jr. High Boys Basketball practice 4:30-5:30
Wednesday	Homework Club 3:00-4:15
Thursday	Homework Club 3:00-4:15 HS Boys Basketball practice 3:00-5:00 Jr. High Boys Basketball practice 4:30-5:30

See Sports schedule and other dates of interest in following pages

PLEASE REMEMBER THAT YOUR DONATION TO ST. ANDREW SCHOOL IS TAX DEDUCTIBLE.

Teacher In-service: October 20 and 21

There will be **no school** for students on **October 20th and 21st**. Our faculty will be having Teacher In-Services these days.



Virtuous Citizens Enthusiastic Catholics Resourceful Learners Open Witnesses

Expectd **S**tudent **L**earning **R**esults

Our students are Resourceful Learners:

On Oct. 11th, the American Government class (11th and 12th grades) will hear Mr. Frank Crowley speak about Administrative Law. Later, they will hear Mr. Rick Pyfer speak about the judicial branch, the court system, and being a lawyer in that system.

/ : / : / : / : / : /

On Thursday, August 29, 2016, the seventh graders at St. Andrew School visited the St. Mary's Jubilee Garden. This garden is a great way for building community and teaching people to care for the earth. Father Richard, pastor of St. Mary Catholic Community, stated, "In Helena there are many people who live in apartments and don't have a place to grow fresh vegetables for themselves and their family and so we have opened up this Jubilee Garden in our Parish community and to our neighbors and friends in the Helena area"(2016). This Garden has the support of Bishop Thomas, who blessed it earlier this year. While the students were at the garden, they harvested tomatoes, corn, peppers and carrots and cleared two plots. Then they sorted the tomatoes into three categories: ripe, almost ripe, and totally green. They brought **104 pounds** of ripe tomatoes and other produce to Helena Food Share. Tomatoes that were not ripe will also be brought to Helena Food Share when ripe.

After bringing their vegetables to Helena Food Share, the students were given a tour by Jake, an employee. Donating to this organization is a great way to help people who are poor and hungry get the nutrients they need. Volunteers at the food share stock shelves, help the clients, and pack the food. If you do not have time to volunteer, you can always donate food or money. Employees at Helena Food Share say that foods most needed are canned soup, peanut butter, canned tuna, flour, and other canned food. To donate, drop it off at 1616 Lewis Street or at local collections.

Gardens are not only a good way to care for the earth and people in need, but they can also be patriotic. Victory Gardens were gardens that citizens of the United States used during World War II. At that time, the people not fighting in the war had gardens to feed themselves. Since the people not fighting fed themselves from their gardens, farmers could focus on feeding the soldiers. Today, people who have a garden often use it as a patriotic symbol with flowers of red, white, and blue to represent the end of wars and our gratitude for peace.

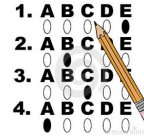


Seventh grade students from St. Andrew School tasting onions at the Helena Food Share Community Garden

PLEASE REMEMBER THAT YOUR DONATION TO ST. ANDREW SCHOOL IS TAX DEDUCTIBLE.

Seniors & Juniors SAT prep. Class

Mrs. Bell will hold SAT prep. classes on Tuesdays and Thursdays at 1:15 in room 304 for students in grades 11 and 12. Students are not required to take the class, but it is HIGHLY recommended.



PSAT Information

The PSAT will be given to students in **grades 10 and 11** on Wednesday, October 19th at St. Andrew School from 8:30 to 11:30am. This test is from College Board/National Merit Scholarship Corporation. Students who wish to take the test will be required to pay \$15, due by **Tuesday, October 18th**.

NOTE: The College Board has increased the fee for PSAT to \$15 this year.

Practice tests are available at <https://collegereadiness.collegeboard.org/psat-nmsqt-psat-10/practice>
These tests are not mandatory. **Classes will be held for students not taking the test.**

Sports

Jr. High Boys Basketball:

Saturday, Nov. 12 Clancy Tournament
Tuesday, Nov. 15 Game at Boulder 5:00
Thursday, Nov. 17 Home game/Home School 5:00
Monday, Nov. 28 Home game/Home School 5:00
Monday, Dec. 5 Home game/Boulder



We will not be able to have Jr. High Girls' Basketball without a coach!



Starts Dec. 8 and goes through Feb. 21. Practices will be Tuesdays & Thursdays 4:30-5:30.

Parents if any of you are interested in coaching Jr. High Girls' Basketball please contact Sarah Birnel at sbirnel@standrewschool.org or 406-202-0954.

**Parents please think about whether you
or someone you know can help.**

ALSO... Please email Sarah Birnel sbirnel@standrewschool.org

If your daughter would like to play Jr High Basketball.

OR

If your son or daughter would like to play High School Basketball.

PLEASE REMEMBER THAT YOUR DONATION TO ST. ANDREW SCHOOL IS TAX DEDUCTIBLE.

Picture Day



Individual and class photos will be taken on Thursday, October 17th. Forms were sent home last week. Siblings will be photographed first from 8:00-8:30am, followed by class groups and individuals. School uniforms are to be worn for pictures.

PARENTS, GRANDPARENTS AND FRIENDS OF ST. ANDREW, HAVE WE GOT A SALE FOR YOU!

Beginning next week, St. Andrew School will offer our families, their relatives and friends the opportunity to purchase beautiful diamond, pearl, and 14 karat gold fine jewelry at significantly reduced retail prices!



Keep an eye out for our flyer in next week's Newsletter to see what beautiful jewelry you can own or buy as a gift for Christmas, anniversary, birthday - you name it.

Save yourself time and avoid the holiday scramble. St. Andrew School is making it simple and economical to shop. And if that news wasn't good enough, you will be happy to know that a portion of your purchase will go to support the many programs that make St. Andrew School a Montana gem!

FALL FUNDRAISER

Hooray! The time is here!! We are excited to be partnering once again with The Parrot Confectionery, to help us raise money for our school. The fundraiser starts today! Your order form is being sent home with today's newsletter. Additional forms can be obtained at the office. Orders are due in the school office by **Wednesday, November 2nd**. The fundraiser is intended for friends, families and neighbors. We do not intend that the students go door-to-door.

Please make sure to let everyone know that all Parrot products are made in a facility that processes nuts.

The TOP seller will receive a **\$100** cash prize;

2nd place seller will receive a **\$50** cash prize;

3rd place seller will receive a **\$25** cash prize.

All students selling a minimum of \$100 will receive a large jawbreaker!



YUM!

Have fun and Good Luck!

PLEASE REMEMBER THAT YOUR DONATION TO ST. ANDREW SCHOOL IS TAX DEDUCTIBLE.

SCHOOL CALENDAR

First Quarter (August 24 – November 1)

October 17	School Picture Day – Staff at 7:45
Oct 19	PSAT grades 10 & 11
Oct 20, 21	Professional Days-NO SCHOOL
October 28	End of First Quarter

Second Quarter (November 2 – January 18)

October 31	Fall Festival (1:00-3:00 p.m) in classrooms
November 2	Report Cards
November 10	Half day 11:45 release (Teacher's Meeting)
November 22	K-1 Bowl of Thanksgiving
November 23 - 25	Thanksgiving break (no school)
November 30	St. Andrew Feast Day School Mass 10:00
December 1	Picture re-take day, 8:30-9:30
December 6	Half day 11:45 release (Teacher's Meeting)
December 12	Mid-quarter letter to parents re: marginal grades
December 16	Christmas Program K-5 (1:00 pm); 6-12 (7:00 p.m)
Dec. 19 – Jan. 1	Christmas Break
January 2	Classes Resume
January 12	Half day 11:45 release (Teacher's Meeting)
January 16-18	8 - 12 Semester Exams (Noon release grades 8-12)

Parent Volunteers

Parents who will be working with students on a regular basis will need to take a VIRTUS class. This includes classroom aides, coaches, parking lots aides, driving for field trips, etc.

You MUST pre-register for the class. There will be no registration on-site.

You MUST be on time for class; late comers will not be allowed in.

Those who attend MUST be present for the entire class.

There can be no exceptions.

Classes are scheduled as follows in Helena:

Tuesday, October 25, 6-9pm, St. Mary Catholic Community, 1700 Missoula Ave.

Tuesday, November 29, 6-9pm, St. Mary Catholic Community, 1700 Missoula Ave.

To register go to <https://www.virtusonline.org/virtus> and choose the Safe Environment Training Schedule. Choose the Helena location and register for the class of your choice.

In addition please note the following: Anyone who is working with students on a regular basis is required to:

- 1) Read the new revised Diocese of Helena ***Policy Regarding Abuse of Minors, Sexual Misconduct and Sexual Harassment and Code of Pastoral Conduct*** (May 2015 document.)
- 2) sign the *Statement of Receipt and Agreement (for Lay Employees and Volunteers)* indicating that they have read and agree to abide by the policies.

Electronic copies of both the policy and the Receipt and Agreement are available at www.diocesehelena.org.

PLEASE REMEMBER THAT YOUR DONATION TO ST. ANDREW SCHOOL IS TAX DEDUCTIBLE.



Emerald Isle Auction 2017



Procurement cards are ready for pick up. If you had certain cards last year and would like them again this year, please come to the office right away to check them out. **This is a huge job and is very important to the auction. Please help** this committee with getting items/services procured so that we are not scrambling at the last minute. We all have a responsibility to help out on this committee. Whether by reaching out to family members, businesses/individuals who have donated in the past, or new businesses/individuals, your help makes this process be successful much more quickly. The items and services donated by these generous entities help bring in money for the school when they are bid on at the auction.

If you are uncomfortable making this contact your services could be used to arrange pick up of items that have been procured. Please let me know if you would prefer to do this.

- Remember to always check out a card before contacting a business or individual. It is very embarrassing to contact someone requesting a donation when someone else has already been to visit, but did not mark the card out in the book.
- If you are unable to get to the school to check out the cards, please contact the secretary and ask her to check certain cards out in your name and hold them. Stay on the line to make sure those cards are not already checked out. Cards should be picked up within the week or they will be returned to the box.
- Here are some items to have with you when procuring: procurement card, procurement letter, calendar & pencil/pen. Make notes on the card, including contact dates/times, pick-up date/time (if you are not given the item immediately), value of the donation, point of contact, donor's mailing address and item(s)/service(s) being donated.
- Do not be discouraged if you have to call back several times and get passed to various people. They are busy people, too.

Sample Call Script: Hello, my name is _____. I am calling on behalf of St. Andrew School. (Thank you for your generous donation last year). We are holding our annual Emerald Isle Auction on February 25th, 2017. Would you be willing to donate an item or gift certificate or make a donation to our school?... Thank you for your support!

Should you have any questions, please feel free to contact me. Jenne Caudle 202-2391 or sassysolo@yahoo.com



**Child care available on October 20 & 21 (No School).
Call Molly LaChere at 465-4002 to reserve a space.**

PLEASE REMEMBER THAT YOUR DONATION TO ST. ANDREW SCHOOL IS TAX DEDUCTIBLE.

TWO NEW WAYS TO HELP THE SCHOOL

OCTOBER 27TH 5-7pm

At TACO JOHN'S

2301 N. MONTANA

Mention St. Andrew School or bring a flyer to Taco John's on Montana and the school will get 50% of the amount of the purchase. (Or you can use a coupon available at the school office.)

PLEASE NOTE: We are not allowed to pass out coupons or actively recruit customers at the restaurant on the 27th, but please mention this date to your family, friends, and neighbors.

NEW BOX TOP BONUS APP

Earn even more cash to help the school get what it needs through the Box Tops for Education Bonus App.

DOWNLOAD THE APP TODAY!

Download on the App Store

Android app on Google play

You can earn Bonus Box tops in the Box Tops Bonus App in combination with the on-pack Box Tops clip and any other coupon, discount, store program or promotion.

PLEASE REMEMBER THAT YOUR DONATION TO ST. ANDREW SCHOOL IS TAX DEDUCTIBLE.