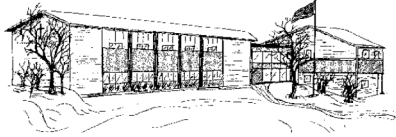


# St. Andrew School Newsletter



1900 Floweree St.  
P.O. Box 231  
Helena, MT 59601

Phone:  
(406)449-3201

Fax:  
(406)449-0129

E-mail:  
standrew@standrewschool.org  
*Vitam Impendere Vero*



## Expected School-wide Learning Results:

**St. Andrew students are:**

Virtuous Citizens   Enthusiastic Catholics   Resourceful Learners   Open Witnesses

## Looking Ahead:

**Oct. 4, 2016**

Oct. 3-8	Missoula Children's Theatre
Oct. 8	St. Andrew/MCT performance of Peter & Wendy, 11:00am
Oct. 17	Picture Day
Oct. 19	PSAT
Oct. 20-21	No School – Professional Days
Oct. 27	Taco John's fundraiser
Oct. 28	End of quarter
Oct. 31	Fall Fest
Nov. 2	Report Cards
Nov. 10	Half day, 11:45 dismissal, teacher meetings

## Ongoing Weekly Extracurricular Activities:

Monday	Homework Club 3:00-4:15
Tuesday	Homework Club 3:00-4:15
Wednesday	Homework Club 3:00-4:15
Thursday	Homework Club 3:00-4:15

## See Sports schedule and other dates of interest in following pages

(Note: There will not be sports practices Oct. 3-7 since Missoula Children's Theatre will use the gym.)

**PLEASE REMEMBER THAT YOUR DONATION TO ST. ANDREW SCHOOL IS TAX DEDUCTIBLE.**

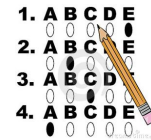
## Teacher In-service: October 20 and 21

There will be **no school** for students on **October 20<sup>th</sup> and 21<sup>st</sup>**. Our faculty will be having Teacher In-Services these days.

**St. Andrew School Choir**  
**There will be no choir practice on Wednesday this week due to**  
**Missoula Children's Theatre.**  
**Juniors and Seniors will have an early release.**  
**Freshman and Sophomores will have a study hall.**

**Attn: PARENTS**

**PSAT Information**



The PSAT will be given to students in **grades 10 and 11** on Wednesday, October 19<sup>th</sup> at St. Andrew School from 8:30 to 11:30am. This test is from College Board/National Merit Scholarship Corporation. Students who wish to take the test will be required to pay \$14, due by **Tuesday, October 18<sup>th</sup>**.

Practice tests are available at <https://collegereadiness.collegeboard.org/psat-nmsqt-psat-10/practice>

These tests are not mandatory. **Classes will be held for students not taking the test.**

**Picture Day**



Individual and class photos will be taken on Thursday, October 17<sup>th</sup>. Forms were sent home last week. Siblings will be photographed first from 8:00-8:30am, followed by class groups and individuals. School uniforms are to be worn for pictures.

**Sports**

PLEASE REMEMBER THAT YOUR DONATION TO ST. ANDREW SCHOOL IS TAX DEDUCTIBLE.

# NO PRACTICES IN THE GYM OCT. 3 -7 DUE TO MCT

## Jr. High Boys Basketball:

Saturday, Nov. 12 Clancy Tournament  
Tuesday, Nov. 15 Game at Boulder 5:00  
Thursday, Nov. 17 Home game/Home School 5:00  
Monday, Nov. 28 Home game/Home School 5:00  
Monday, Dec. 5 Home game/Boulder



**We will not be able to have Jr. High Girls' Basketball without a coach!**



Starts Dec. 8 and goes through Feb. 21. Practices will be Tuesdays & Thursdays 4:30-5:30.

Parents if any of you are interested in coaching Jr. High Girls' Basketball please contact Sarah Birnel at [sbirnel@standrewschool.org](mailto:sbirnel@standrewschool.org) or 406-202-0954.

**Parents please think about whether you  
or someone you know can help.**

ALSO... Please email Sarah Birnel [sbirnel@standrewschool.org](mailto:sbirnel@standrewschool.org)

If your daughter would like to play Jr High Basketball.

OR

If your son or daughter would like to play High School Basketball.

## ST. ANDREW SCHOOL ACADEMIC SCHEDULE 2016-17

### First Quarter (August 24 – November 1 )

October 3 - 8	Missoula Children's Theatre: Peter and Wendy
October 17	School Picture Day – Staff at 7:45
Oct 19	PSAT grades 10 & 11
Oct 20, 21	Professional Days-NO SCHOOL
October 28	End of First Quarter

### Second Quarter (November 2 – January 18 )

October 31	Fall Festival (1:00-3:00 p.m) in classrooms
November 2	Report Cards
November 10	Half day 11:45 release (Teacher's Meeting)
November 22	K-1 Bowl of Thanksgiving
November 23 - 25	Thanksgiving break (no school)
November 30	St. Andrew Feast Day School Mass 10:00
December 1	Picture re-take day, 8:30-9:30
December 6	Half day 11:45 release (Teacher's Meeting)
December 12	Mid-quarter letter to parents re: marginal grades
December 16	Christmas Program K-5 (1:00 pm); 6-12 (7:00 p.m)
Dec. 19 – Jan. 1	Christmas Break
January 2	Classes Resume
January 12	Half day 11:45 release (Teacher's Meeting)
January 16-18	8 - 12 Semester Exams (Noon release grades 8-12)

**PLEASE REMEMBER THAT YOUR DONATION TO ST. ANDREW SCHOOL IS TAX  
DEDUCTIBLE.**

# Seniors & Juniors SAT prep. Class

Mrs. Bell will hold SAT prep. classes on Tuesdays and Thursdays at 1:15 in room 304 for students in grades 11 and 12. Students are not required to take the class, but it is HIGHLY recommended.

## Parent Volunteers

Parents who will be working with students on a regular basis will need to take a VIRTUS class. This includes classroom aides, coaches, parking lots aides, etc.

You MUST pre-register for the class. There will be no registration on-site.

You MUST be on time for class; late comers will not be allowed in.

Those who attend MUST be present for the entire class.

There can be no exceptions.

Classes are scheduled as follows in Helena:

Tuesday, October 25, 6-9pm, St. Mary Catholic Community, 1700 Missoula Ave.

Tuesday, November 29, 6-9pm, St. Mary Catholic Community, 1700 Missoula Ave.

To register go to <https://www.virtusonline.org/virtus> and choose the Safe Environment Training Schedule. Choose the Helena location and register for the class of your choice.

In addition please note the following: Anyone who is working with students on a regular basis is required to:

- 1) Read the new revised Diocese of Helena *Policy Regarding Abuse of Minors, Sexual Misconduct and Sexual Harassment and Code of Pastoral Conduct* (May 2015 document.)
- 2) sign the *Statement of Receipt and Agreement (for Lay Employees and Volunteers)* indicating that they have read and agree to abide by the policies.

An electronic copy of both the policy is available at [www.diocesehelena.org](http://www.diocesehelena.org). You may also borrow a copy from the school office. Please come to the office to sign the form.

**Deadline for sign-off sheets to be received at St. Andrew by: October 1, 2016**



## Emerald Isle Auction 2017



Welcome back to another year at St. Andrew! It's time to start thinking about the Emerald Isle Auction scheduled for Feb. 25, 2017. This special night requires a lot of volunteer hours to make it work whether it be coordinating, cleaning, decorating, procuring auction items or even washing dishes. There are so many ways you and your student can help make this night a success. In the coming weeks, the auction staff will be reaching out for assistance. In the meantime, I would like to provide some information to the new families who have joined us.

The proceeds of this fundraiser go toward tuition as parents pay about 3/4 of the cost of educating the students. Some of the proceeds have gone towards special projects including online grading software, paving the parking lot, renting modulars, chairs for assemblies, desks, lockers and art supplies, etc. The school also offers financial aid for students whose families are not able to afford the tuition.

**PLEASE REMEMBER THAT YOUR DONATION TO ST. ANDREW SCHOOL IS TAX DEDUCTIBLE.**

**Procurement Co-Chair Needed:**

Duties: Contributing ideas for large auction items and organizing parents procuring donations from businesses and /or individuals. We have a list of those who have donated in the past and always welcome making contact with new potential donors. You will also coordinate with individuals who are picking up items that have been promised and need to be brought to the school. You will NOT be required to do all of the procurement. We ask that all families work to procure 4 to 5 cards, so no one will have to do too many. Two lovely ladies have already stepped up and we could really use one or two more. Michelle Field and Mary Dixon are working on live auction items and jewelry; they are both a pleasure to work with.

Many of our Corporate Sponsors are parents or friends of parents. If you know of anyone who would like to advertise their business by being a Corporate Sponsor at St. Andrew, please give the office their names and we will send them a letter.

**GOLD LEVEL - \$2,500**

Eight complimentary event tickets  
Individual gold level sponsorship banner (2'x3') displayed in St. Andrew School gym for one year  
Exclusive gold level corporate signage on all auction tables  
Full page color advertisement in Emerald Isle Auction Catalog  
Recognition on our web site for one year  
Corporate recognition in the annual St. Andrew benefactor's newsletter  
Acknowledgement in Emerald Isle Auction slideshow presentation  
Verbal recognition during Emerald Isle Auction

**SILVER LEVEL - \$1,000**

Four complimentary event tickets  
Individual silver level sponsorship banner (1'x3') displayed in the St. Andrew gym for one year  
Half page color advertisement in Emerald Isle Auction Catalog  
Recognition on our web site for one year  
Corporate recognition in the annual St. Andrew benefactor's newsletter  
Verbal recognition during Emerald Isle Auction

**BRONZE LEVEL- \$500**

Two complimentary event tickets  
Listed recognition on bronze level sponsorship banner displayed in the St. Andrew gym for one year  
Business card color advertisement in Emerald Isle Auction Catalog  
Recognition on our web site for one year  
Corporate recognition in the annual St. Andrew benefactor's newsletter  
Verbal recognition during Emerald Isle Auction

If you or someone you know has a time-share that will not be used, please consider donating it to the raffle this year (and get a tax break for it). Do you have access to accommodations at a great family get-away place? This would be a great auction item!  
Call the school office with the information 449-3201

Please feel free to contact me if you have questions regarding the auction. I may be reached at 202-2391 or [sassysolo@yahoo.com](mailto:sassysolo@yahoo.com). I look forward to working with all of you to help make this auction a success!. Thank you.

Jenne Caudle, Auction Coordinator

**PLEASE REMEMBER THAT YOUR DONATION TO ST. ANDREW SCHOOL IS TAX DEDUCTIBLE.**

## **TWO NEW WAYS TO HELP THE SCHOOL**

**OCTOBER 27<sup>TH</sup>  
At TACO JOHN'S  
2301 N. MONTANA**

**Mention St. Andrew School or bring a flyer to Taco John's on Montana and the school will get 50% of the amount of the purchase.**

**(Or you can use a coupon available at the school office.)**

## **NEW BOX TOP BONUS APP**

**Earn even more cash to help the school get what it needs through the Box Tops for Education Bonus App.**

**DOWNLOAD THE APP TODAY!**

**Download on the App Store**

**Android app on Google play**

**You can earn Bonus Box tops in the Box Tops Bonus App in combination with the on-pack Box Tops clip and any other coupon, discount, store program or promotion.**

**PLEASE REMEMBER THAT YOUR DONATION TO ST. ANDREW SCHOOL IS TAX DEDUCTIBLE.**