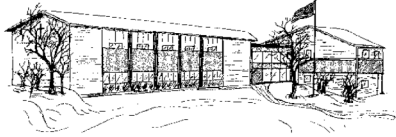


# St. Andrew School Newsletter



1900 Floweree St.  
P.O. Box 231  
Helena, MT 59601

Phone:  
(406)449-3201

Fax:  
(406)449-0129

E-mail:  
standrew@standrewschool.org  
*Vitam Impendere Vero*



## Expected School-wide Learning Results:

**St. Andrew students are:**

Virtuous Citizens   Enthusiastic Catholics   Resourceful Learners   Open Witnesses

## Looking Ahead:

**Sep. 27, 2016**

Sep. 27-Oct. 3	Starbase, Ft. Harrison, Gr. 5 & 6
Sep. 28	Last day to turn in MCT permission slips
Sep. 29	7 <sup>th</sup> grade Field trip, Jubilee Garden, St. Mary Catholic Community
Oct. 3-8	Missoula Children's Theatre
Oct. 8	St. Andrew/MCT performance of Peter & Wendy, 11:00am
Oct. 17	Picture Day
Oct. 19	PSAT grades 10 & 11
Oct. 20-21	No School – Professional Days
Oct. 28	End of quarter
Oct. 31	Fall Fest
Nov. 2	Report Cards

## Ongoing Weekly Extracurricular Activities:

Monday	Homework Club 3:00-4:15
Tuesday	Homework Club 3:00-4:15 Volleyball practice 3:15-4:30 Boys Basketball practice 4:30-5:30
Wednesday	Homework Club 3:00-4:15
Thursday	Homework Club 3:00-4:15 Volleyball practice 3:15-4:30 Boys Basketball practice 4:30-5:30

**See Sports schedule and other dates of interest in following pages**

**(Note: There will not be sports practices Oct. 3-7 since Missoula Children's Theatre will use the gym.)**

**PLEASE REMEMBER THAT YOUR DONATION TO ST. ANDREW SCHOOL IS TAX DEDUCTIBLE.**

## STARBASE

September 29 – October 3

Grades 5 & 6

Fort Harrison

Welcome to DoD STARBASE.

We look forward to an action packed week of learning, fun and excitement.

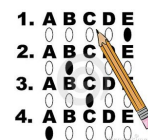
What to expect: Students and teachers will arrive at Montana Air National Guard-Fort Harrison around 9am. Students will be given name tags and directed to their lockers to hang their coats and place their sack lunches (if applicable). Students will have name badges awaiting them upon their arrival at STARBASE.

## Seniors & Juniors SAT prep. Class

Mrs. Bell will hold SAT prep. classes on Tuesdays and Thursdays at 1:15 in room 304 for students in grades 11 and 12. Students are not required to take the class, but it is HIGHLY recommended.

Attn: **PARENTS**

**PSAT Information**



The PSAT will be given to students in **grades 10 and 11** on Wednesday, October 19<sup>th</sup> at St. Andrew School from 8:30 to 11:30am. This test is from College Board/National Merit Scholarship Corporation. Students who wish to take the test will be required to pay \$14, due by **Tuesday, October 18<sup>th</sup>**.

Practice tests are available at <https://collegereadiness.collegeboard.org/psat-nmsqt-psat-10/practice>

These tests are not mandatory. **Classes will be held for students not taking the test.**

**40 DAYS FOR LIFE**

**Fall Campaign September 28-November 6**

\*For more information check out the website [www.40daysforlife.com/Helena](http://www.40daysforlife.com/Helena)

PLEASE REMEMBER THAT YOUR DONATION TO ST. ANDREW SCHOOL IS TAX DEDUCTIBLE.

# Sports

## NO PRACTICES IN THE GYM OCT. 3 -7 DUE TO MCT

### Volleyball 5th, 6th, 7th & 8th grade:

Thursday, Sep. 29 Home game/Lincoln 4:30  
Saturday, Oct. 1 Townsend Tournament  
Tuesday, Oct. 4 Game at Boulder 4:00

### Jr. High Boys Basketball:

Thursday, Oct. 20 Game at Clancy 4:00  
Tuesday, Oct. 25 Game at Clancy 4:00  
Saturday, Nov. 12 Clancy Tournament  
Tuesday, Nov. 15 Game at Boulder 5:00  
Thursday, Nov. 17 Home game/Home School 5:00  
Monday, Nov. 28 Home game/Home School 5:00  
Monday, Dec. 5 Home game/Boulder



**We will not be able to have Jr. High Girls' Basketball without a coach!**



Starts December 8 and goes through February 21 Practices will be Tuesdays & Thursdays 4:30-5:30  
Parents if any of you are interested in coaching Jr. High Girls' Basketball please email Sarah Birnel or call her [sbirnel@standrewschool.org](mailto:sbirnel@standrewschool.org) or 406-202-0954.

**Parents please think about whether you or someone you know can help.**

## ST. ANDREW SCHOOL ACADEMIC SCHEDULE 2016-17

### First Quarter (August 24 – November 1 )

September 30	Mid-quarter letter to parents re: marginal grades
October 3 - 8	Missoula Children's Theatre: Peter and Wendy
October 17	School Picture Day – Staff at 7:45
Oct 19	PSAT grades 10 & 11
Oct 20, 21	Professional Days-NO SCHOOL
October 28	End of First Quarter

### Second Quarter (November 2 – January 18 )

October 31	Fall Festival (1:00-3:00 p.m) in classrooms
November 2	Report Cards
November 10	Half day 11:45 release (Teacher's Meeting)
November 22	K-1 Bowl of Thanksgiving
November 23 - 25	Thanksgiving break (no school)
November 30	St. Andrew Feast Day School Mass 10:00
December 1	Picture re-take day, 8:30-9:30
December 6	Half day 11:45 release (Teacher's Meeting)
December 12	Mid-quarter letter to parents re: marginal grades
December 16	Christmas Program K-5 (1:00 pm); 6-12 (7:00 p.m)
Dec. 19 – Jan. 1	Christmas Break
January 2	Classes Resume
January 12	Half day 11:45 release (Teacher's Meeting)
January 16-18	8 - 12 Semester Exams (Noon release grades 8-12)

**PLEASE REMEMBER THAT YOUR DONATION TO ST. ANDREW SCHOOL IS TAX DEDUCTIBLE.**

## Parent Volunteers

Parents who will be working with students on a regular basis will need to take a VIRTUS class. This includes classroom aides, coaches, parking lots aides, etc.

You MUST pre-register for the class. There will be no registration on-site.

You MUST be on time for class; late comers will not be allowed in.

Those who attend MUST be present for the entire class.

There can be no exceptions.

### Virtus Training

**When:** Saturday, October 1st - 9am to 1pm

**Where:** St. Andrew School, Mr. Petesch's Room (301)

**Sign Up:** Link <https://www.virtusonline.org/virtus>

Choose First time registrant shown on the left side of screen

Sign up for the St Andrew School class offered

### Additional opportunities to take the Virtus class:

Classes are scheduled as follows in Helena:

Tuesday, September 27, 6-9pm, St. Mary Catholic Community, 1700 Missoula Ave.

Tuesday, October 25, 6-9pm, St. Mary Catholic Community, 1700 Missoula Ave.

Tuesday, November 29, 6-9pm, St. Mary Catholic Community, 1700 Missoula Ave.

To register go to <https://www.virtusonline.org/virtus> and choose the Safe Environment Training Schedule. Choose the Helena location and register for the class of your choice.

In addition please note the following: Anyone who is working with students on a regular basis is required to:

- 1) Read the new revised Diocese of Helena *Policy Regarding Abuse of Minors, Sexual Misconduct and Sexual Harassment and Code of Pastoral Conduct* (May 2015 document.)
- 2) sign the *Statement of Receipt and Agreement (for Lay Employees and Volunteers)* indicating that they have read and agree to abide by the policies.

An electronic copy of both the policy is available at [www.diocesehelena.org](http://www.diocesehelena.org). You may also borrow a copy from the school office. Please come to the office to sign the form.

**Deadline for sign-off sheets to be received at St. Andrew by: October 1, 2016**

## Parents, please make sure you use RenWeb to see your child's assignments and grades.

How to get onto RenWeb:

Go to [www.renweb.com](http://www.renweb.com)

On the right side is a Login button.

Choose Parent's Web on the pull down menu

The District Code is sa-mt

Your user name is your first initial and last name (unless you changed this at some point).

Your password is the one you used when you enrolled. If you are not sure what your password or user name is, you can request that it be emailed to you.

**Also, if you change your phone # or address please let us know.**

PLEASE REMEMBER THAT YOUR DONATION TO ST. ANDREW SCHOOL IS TAX DEDUCTIBLE.

## St. Andrew School Attendance Policy

Parents, please be reminded that the attendance policy, as written in the school handbook, is the following:

2.2.10 Attendance is necessary for academic success at St. Andrew School. Absences should therefore be rare, reserved for occasions such as **illness, occasional prearranged family travel, medical treatment, or funerals**. Absences which are school related are of course, excused but should be prearranged. Such absences would include, but not be limited to, speech and spelling competitions and music festivals.

2.2.13 An unexcused absence is defined as missing classes for reasons other than one of the aforementioned or leaving the building without parental or teacher permission. **Make up work and credit for daily assignments will not be provided for unexcused absences.** If tests are administered during an unexcused absence, the student will receive no credit for the exam.

2.2.14 (ABSENCE POLICY) Any student accruing more than 20 absences during the year (10 per semester, counting both excuse and unexcused absences) will receive a grade of "F" for the year, and be required to repeat the year. For Eighth Grade and high school students, the absences will be counted per class, and an absence will be missing more than the first 20 minutes of class. Students coming in within 20 minutes of the beginning of class will be considered late or tardy; for the purposes of this policy, six (6) tardies will count as one absence.

It will be greatly appreciated if you would send a note in to the school when your child is absent for an **illness, occasional prearranged family travel, or funeral**. The note should explain the reason why the student is not in school. A note from a doctor or orthodontist is also acceptable. This makes it easier for the teacher to



The Missoula Children's Theatre is coming back to St. Andrew the week of October 3-8, 2016 to help our students perform PETER AND WENDY. Approximately 60 St. Andrew students can participate. Here are some details that might be helpful in deciding if your student should try out.



## LAST CHANCE TO SIGN UP - MUST BE RETURNED TOMORROW, SEP. 28<sup>TH</sup>

My child(ren) have permission to audition for MCT's PETER AND WENDY. I understand that if chosen for the play my student may need to attend rehearsal from 2:00 to 6:15 p.m., Monday through Thursday. They will also need to be available for the dress rehearsal and performances on Friday, October 7<sup>th</sup> and Saturday, October 8<sup>th</sup>. I understand that students will not be excused from rehearsals or performances for practices, appointments, etc., but must keep the week completely free for this residency.

Parent or Guardian Signature \_\_\_\_\_ Best Phone #: \_\_\_\_\_

Email: \_\_\_\_\_

Name and grade of each student: \_\_\_\_\_

- I can also help out by:  Being a parent helper  
 Making an additional donation of \$ \_\_\_\_\_  
 Provide snacks for after school (please bring them to the office by Friday, Sep. 30)  
 other \_\_\_\_\_  
 Contact me about a Corporate Sponsorship

**(Complete and return to the St. Andrew office by 9/28/16 with the \$20 participation fee for each child. Please make checks out to St. Andrew School).**

Missoula Children's Theatre directors, Erica Miranda Diederich and Joe Godburn, will be at St. Andrew School the week of October 3-7. Thanks to the Ambrose and Lantz/David families, we have housing for both directors. We will accept student registrations for MCT through Wednesday, September 28 or until we have 64 registrations.

If you would like to host our directors for dinner one night during the week of October 3-9, please contact Annette Walstad, MCT Parent Coordinator, at 406-410-0480. Annette is happy to answer any questions about MCT week.

MCT plays are fun entertainment for the entire family, and we hope you will invite your friends and family to see the show Saturday, October 8<sup>th</sup> at 11:00 a.m. If possible, please place the PETER AND WENDY poster attached to this newsletter somewhere in our community.

**PLEASE REMEMBER THAT YOUR DONATION TO ST. ANDREW SCHOOL IS TAX DEDUCTIBLE.**

# ST. ANDREW SCHOOL PRESENTS

MISSOULA  
**CHILDREN'S**  
THEATRE

A PRODUCTION OF MCT, INC.



Saturday, Oct. 8<sup>th</sup> at  
11:00 a.m.

St. Andrew School Gym,  
1900 Flowerree, Helena

Adults (\$5) K-12 (\$3) Preschool (\$1) Family (\$15)

Tickets available at the door

General Seating, doors open 1 hr. before show time

Call St. Andrew School at (406) 449-3201 for more information

## PRESENTED LOCALLY BY



FIRE TOWER REALTY  
FIRETOWERREALTY.COM

**JOHN RAUSCH**  
**406.465.1011**

PLEASE REMEMBER THAT YOUR DONATION TO ST. ANDREW SCHOOL IS TAX DEDUCTIBLE.