

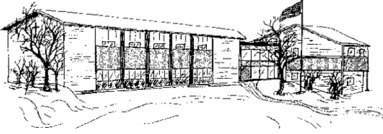
# St. Andrew School Newsletter

April 11, 2017

P.O. Box 231 Helena, Montana 59624 1900 Flowerree Street Helena, Montana 59601

406- 449-3201(Phone) 406-449-0129 (Fax)

[www.standrewschool.org](http://www.standrewschool.org)



## Looking Ahead:

Apr. 13	<b>ACE New and Returning Students Scholarship forms due</b>
Apr. 13	<b>Enrollment Applications Due</b>
Apr. 14	Good Friday, NO SCHOOL
Apr. 17	Easter Monday, NO SCHOOL
Apr. 18	Youth Electrum at Holter (for winners of St. A art show)
April 20	Gr. K-7 Walk-a-thon and play at Carroll College Theatre
April 20	Gr. K-7 <b>Parents pick up and drop off at Carroll's PE center!</b>
Apr. 24-27	Gr. 2-10, Iowa Basics
Apr. 27	Early release, 11:45, Teachers' meeting
April 28	Talent Show Tryouts
May 5	Small school Track Meet at HMS

## Ongoing Weekly Extracurricular Activities:

Monday	Tuesday	Wednesday	Thursday	Friday
Homework Club 3:00-4:15 MS Bike Club 3:00	Homework Club 3:00-4:15	Homework Club 3:00-4:15	Homework Club 3:00-4:15	HS Bike Club 3:00



## CRS Rice Bowl

PLEASE RETURN RICE BOWLS IF YOU HAVE NOT ALREADY DONE SO

## Expected School-wide Learning Results

St. Andrew students are: **VERO-** Virtuous Citizens **E**nthusiastic Catholics **R**esourceful Learners **O**pen Witnesses

PLEASE REMEMBER THAT YOUR DONATION TO ST. ANDREW SCHOOL IS TAX DEDUCTIBLE.

# Enrollment for 2017-18 Has Begun!

Last year St. Andrew began an online enrollment system through RenWeb. Since you enrolled last year, all your information should still be in the system and enrollment will be easier than ever. In addition, you will be able to view your own information at any time and update information whenever something changes and it will be immediately available to the school.

## Re-Enrollment

Please note that RenWeb charges a \$10 fee for online enrollment which will not be returned to the school. As in the past, St. Andrew will charge \$100 for returning families. This non-refundable fee will be credited towards your child's annual (book) fee.

## How to Enroll:

- Please go to [www.renweb.com](http://www.renweb.com)
- Select Logins from the menu bar and ParentsWeb Login from the drop-down menu.
- Type in your username and password. If you have forgotten your username or password, please click on the link provided.
- After logging in, click on the **Family Information** button in the left menu.
- Click on the **Enrollment/Reenrollment** button.

Our Online Enrollment system will open with a link to the enrollment packet for your child. The online process should take approximately 15 minutes to complete. Your information will be saved if you need to quit and come back later. The Instructions and Enrollment Checklist page of the enrollment packet contains supplemental enrollment forms that also must be submitted. Further instructions on these forms are provided online.

To complete our online reenrollment process, you will access our ParentsWeb through your existing login. If you do not have a login, please follow the [Instructions for Creating a ParentsWeb Login](#) listed below.

If you have a new Kindergarten student coming into the school, we will call you to help you to enroll them.

## Immunizations;

You need not fill in anything to do with immunizations unless you have a Kindergarten or 7<sup>th</sup> grade student. Parents with students in these grades may upload these documents if they wish or just ask their doctor's office to Fax these to the school.

## Tuition Payments:

Parents have the option of paying tuition online by using an e-check or credit card. If you prefer to write a check or use ACH, that is still an option.

Please have your enrollment forms completed as soon as possible. Current students do have priority placement, but classes are filling up. Even if you are a returning family, **it is important that we have your enrollment forms returned by April 13th.**

## Expected School-wide Learning Results

St. Andrew students are: **VERO-** Virtuous Citizens **E**nthusiastic Catholics **R**esourceful Learners **O**pen Witnesses

PLEASE REMEMBER THAT YOUR DONATION TO ST. ANDREW SCHOOL IS TAX DEDUCTIBLE.

## Enrollment Costs

The following is the tuition schedule for the 2017-18 school year:

First Child.....	\$4,440/school year (\$444month/10 months (Aug--May)
Second Child.....	\$3,320/school year (\$332 month/10 months (Aug--May)
Third Child.....	\$2,550/school year (\$255 month/10 months (Aug--May)

Graduation Fee .....	\$50 Due October 1 of a student's 12 <sup>th</sup> grade year.
First HS Student (9-12):.....	Additional \$400/year (\$40/month (Aug—May)
Additional Siblings in HS .....	No Additional Fee

Every student pays the Annual Fee:

\$245.....	If postmarked or paid by June 15, 2017
\$275.....	If postmarked or paid by July 15, 2017
\$295.....	Due August 1, 2017

Non-refundable deposit: \$245.00 per new family and

Non-refundable deposit: \$100.00 per returning family.

In either case, the deposit must accompany the Online Enrollment Agreement and is applied toward the Annual Fee.

Additional Fees;

Online Application Fee for New Students: \$20

Online Re-enrollment fee for Returning Students: \$10

## UPDATE ON FINANCIAL AID

### Financial Aid

Financial aid is available on an as-needed basis. There are three sources of aid available:

**St. Andrew School Financial Aid:** Financial aid applications for St. Andrew should now be submitted online through a company called FACTS. <https://online.factsmgt.com/signin417MB>. This website can also be accessed through the school website under For Parents/Scholarship Applications. You will have to create a username and password. There is a \$30 fee to apply. **Applications must be submitted by April 28, 2017.**

**ACE Scholarships:** ACE Scholarships is a Denver, Colorado non-profit organization. They provide partial tuition scholarships to low-income children in grades K-12 through charitable contributions from private citizens, corporations and foundations. Their website is [www.acescholarships.org](http://www.acescholarships.org). This website provides information only. To obtain an ACE application, please visit the school office. **These applications must be completed and returned to the office by April 15<sup>th</sup>, 2017. Please see information below to renew.**

**Big Sky Scholarships:** Application forms are available in the school office. **These are due by April 28, 2017.**

## Expected School-wide Learning Results

St. Andrew students are: **VERO-** Virtuous Citizens **E**nthusiastic Catholics **R**esourceful Learners **O**pen Witnesses

PLEASE REMEMBER THAT YOUR DONATION TO ST. ANDREW SCHOOL IS TAX DEDUCTIBLE.

# Renewing ACE Scholarships

**Renewing your ACE Applications:** If you received a 2016-17 ACE scholarship, to ensure qualification for 2017-18, fill out the Renewal Application that you should have received in the mail from ACE and return to the school by **April 15<sup>th</sup>**. The Renewal Application consists of two parts – Contact Information and Income Information. Please review and complete both pages to ensure you still qualify for the scholarship.

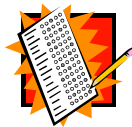
## Contact Information

Verify the contact information and indicate any changes necessary.

## 2016 Income Information

Please complete this entire form. Also attach the first two pages of your 2016 1040A or EZ forms (If you own a business, please attach a copy of the appropriate form for your type of business.) Include a supplemental letter with your financial statements if there have been any significant changes in your financial circumstances since your 2015 taxes were filed or if there is any other information you would like us to know.

Please submit the COMPLETED Renewal Application along with your 2016 1040A or EZ Tax Return and any other forms or letters needed to Denise Hampton at St. Andrew School by **April 15<sup>th</sup>**.



## Attention Junior Students!

### When's the Best Time to Take the SAT?

The SAT and other College Board tests are offered several times a year. Most students take the SAT for the first time during the spring of their junior year and a second time during the fall of their senior year.

SAT Test Date:	Registration Deadline:	Late Registration Deadline:
May 6	April 7	April 25
June 3	May 9	May 24

### Walk-A-Thon Update:

We are so excited about our upcoming Walk-A-Thon on April 20<sup>th</sup>. We hope each student is having success in obtaining family and friends to sponsor them for next week's event. If each student is able to achieve a minimum of \$100 in sponsorships, we will raise approximately \$14,000. That money would allow us to purchase some playground equipment for the upcoming school year. ***If we do hit the goal of \$14,000, we will give all the students from Kindergarten through 7<sup>th</sup> Grade a free dress day before the end of this school year.*** We have the best families in our school and very motivated students: **We can achieve this goal!**

### Expected School-wide Learning Results

St. Andrew students are: **VERO-** Virtuous Citizens **E**nthusiastic Catholics **R**esourceful Learners **O**pen Witnesses

PLEASE REMEMBER THAT YOUR DONATION TO ST. ANDREW SCHOOL IS TAX DEDUCTIBLE.

## Walk-A-Thon for a New Playground

On Thursday, April 20 the Kindergarten through seventh grade will participate in a **Walk-A-Thon** to raise money for new playground equipment. This promises to be a fun day to get some outdoor time! The playground committee's goal is to raise enough money to buy a piece of equipment and have it installed this summer.



**Where:** Carroll College's Football Stadium (off Benton)

**Time:** 8:00 am- **Please drop your children off in front of Carroll's PE center. Teachers will be in front of the PE center to check students in.**

**What to Bring:** A lunch, water bottle, good runners, and layers of clothing in case it is chilly.

### Schedule:

**8:00** Drop your child off in front of the PE center

**8:30-12:00** Walk-a-thon and activities in the football stadium

**12:00** Lunch

**1:00-2:30** Carroll College Play

**2:45** Parents pick up in front of the Carroll PE center.

**2:45 PM Pick-Up procedure for day of the Walk-A-Thon:**

**Park at the Carroll PE Center. Check out your child with the teacher. Teachers will need to see you before they allow your child to leave.**

A **pledge form** is attached to this newsletter (more can be obtained from your child's teacher). Students are not required to get pledges, but will be expected to participate in the day's events. Please let your child's teacher know if you can help.

An **email letter** to send to friends and family is also available.

### Important Dates for Walk-A-Thon

**April 4:** Begin asking for pledges

**April 19:** Close out your pledges

**April 20:** Day of Walk-A-Thon (Drop off/Pick up students in front of Carroll College PE Center)

**May 4:** Money and pledge form turned in to school.

### Prizes for most pledge money collected:

**1<sup>st</sup> place: \$100**

**2<sup>nd</sup> place: \$50**

**3<sup>rd</sup> place: \$25**

### Here are some suggestions for how to maximize your sponsorship donations:

- a) *Email*-We have sent you an email with an attachment (see reverse side for an example). You can copy, paste and edit this form directly into the body of an email. **Send to family and friends all over the country.**
- b) Make a video with your smartphone of your child asking for sponsorship for the walk-a-thon and text that to family and friends.
- c) Call them on the phone-everyone loves to get a phone call from a loved one and everyone would love to help that special someone achieve a goal!
- d) Visit the neighbors you know that would get a kick out of helping your child raise money for a new playground.

### Expected School-wide Learning Results

**St. Andrew students are: VERO- Virtuous Citizens Enthusiastic Catholics Resourceful Learners Open Witnesses**

**PLEASE REMEMBER THAT YOUR DONATION TO ST. ANDREW SCHOOL IS TAX DEDUCTIBLE.**

**The Parent Communication Committee** survey time has ended. Our thanks to all those parents who participated. We will now begin to assess the information obtained.

Parents who are interested in joining the Parent Communication Committee, please call the school office to let us know.

## **Celebrate KNEH, 97.3FM Helena Catholic Radio!**

Join us for our 2017 Banquet on Thursday, April 27<sup>th</sup> at Carroll College Campus Center with Fr. Richard Simon, host of "Fr. Simon Says" heard on Relevant Radio at 9am and 5pm weekdays on KNEH, 97.3FM. **Banquet Tickets \$35.** Buy 7 tickets and get the 8<sup>th</sup> one FREE plus your own reserved table! Call Rose at 410-0968 for this special free ticket offer.

**Also, get your RAFFLE TICKETS for a handcrafted prayer kneeler and a cedar cross at Trinity Books and Gifts or at Planet Gyros. Raffle tickets also for sale at the banquet. DRAWING: April 27 at the banquet.**

**Banquet Tickets MUST be purchased by Sat, April 22**

## **Indoor Tennis Lessons**

Six week sessions are starting April 10 and will go to May 15. Lessons are for students ages 4-7, 8-12, Middle School and High School. Middle School and High School students may join a team and play in tournaments. For more information go online at LCTA, or contact Tom Banks (ptbanks@juno.com) or call 406-439-6938



## **Box Tops and Labels for Education**



CONGRATULATIONS to the K/1st classrooms that collected and earned the most for our school through the Box Tops and Labels for Education programs this year!! The class will receive a \$100 Costco card (donated by a generous, anonymous parent) and an ice cream party for all of their clipping and submitting! Way to go and thank you!

Thanks, also, to all of our parents and volunteers who worked together this year to raise a total of \$571.90 for our school through Box Tops and earn 1,617 Labels for Education points. These totals will be used to purchase much needed supplies for our school.

While the Labels for Education program is winding down this year, don't forget to keep collecting Labels and, especially, Box Tops through the rest of the year and over the summer to make next year's earnings even bigger!

## **Expected School-wide Learning Results**

**St. Andrew students are: VERO- Virtuous Citizens Enthusiastic Catholics Resourceful Learners Open Witnesses**

**PLEASE REMEMBER THAT YOUR DONATION TO ST. ANDREW SCHOOL IS TAX DEDUCTIBLE.**

## St. Andrew Talent Show

May 12<sup>th</sup>

**Auditions to be held on April 28, starting at 10:00 AM**

Categories: Strings, Pianists, Singers, Dance, Magic, Class/Group

The seniors will call students up to the gymnasium to audition by grade.

The seniors have been told to limit the number of students in the Talent Show to 25-30 students, so some students may need to keep practicing for next year! The seniors do invite everyone to try out and give it a shot!

The senior-created rubric (below) will be used to judge each student's performance as objectively as possible for inclusion in the show.

	score	1 to 2	3 to 4	5 to 6	7 to 8	9 to 10
<b>PREPARATION</b>	/10	Not prepared to audition	Needs practice	Nice, but not quite there yet	You better remember everything for the show!	Mega prepared and organized
<b>TIME LIMIT</b>	/10	Ridiculously over or under time	Rein-it-in	Work on that time a bit, will ya?	Crazy close to perfection	3 minutes-ish
<b>CREATIVITY</b>	/10	. . . like oatmeal without brown sugar	oatmeal with sugar, but forgetting the nuts, raisins, and fruit	Creative.	Creatively spicy	Mind-blowingly creative.
<b>CONFIDENCE</b>	/10	Lacking confidence	Be yourself and don't worry 'bout it!	You're awesome so act like it :)	Uber confident	Ready to take over the world, basically
<b>SKILL</b>	/10	Needs A LOTTA practice	Hone those skills!	Needs a lil' practice there, bud	You rocked our socks off.	So much skill, it's crazy man
<b>TOTAL:</b>						
Total possible points: 50      *Must score above a 35 to be considered						

### Expected School-wide Learning Results

**St. Andrew students are: VERO- Virtuous Citizens    Enthusiastic Catholics    Resourceful Learners    Open Witnesses**

PLEASE REMEMBER THAT YOUR DONATION TO ST. ANDREW SCHOOL IS TAX DEDUCTIBLE.

# PIP

## Attention Parents:

**Please come into the school and record your PIP points. We cannot know what you have done so far without your input. We have sent reminder letters if you were short according to our records.**

Remember that you are required to perform 24 hours of service to the school (per family) and will be billed at the rate of \$20/hr for any hours not fulfilled.

## Upcoming PIP opportunities:

- Teacher Appreciation Day Luncheon April 27
- Track meet May 5<sup>th</sup>
- May Crowning May 12<sup>th</sup>
- Help with the kitchen, contact Deirdre at 449-3201

## Also, please call the office if you can help with any of these:

- Replace vent cover on roof
- Fix drawers on metal cabinet in gym
- Repair downspout to east of main school entrance
- Paint window frames in gym
- Install stair handrail(s) in back stair well
- Paint back stair well wall base
- Reinforce Crow's Nest with plywood
- Repair/replace? window opener in Room 303
- Touch-up paint on kitchen cabinets
- Clean out areas with white rocks, front and back of school

## Summer

- Sand and varnish stair handrails (front stairs)
- **Join group to paint the outside trim on the school**

## Expected School-wide Learning Results

**St. Andrew students are: VERO- Virtuous Citizens Enthusiastic Catholics Resourceful Learners Open Witnesses**

**PLEASE REMEMBER THAT YOUR DONATION TO ST. ANDREW SCHOOL IS TAX DEDUCTIBLE.**



\* \* \* \* \*

## The School Store!

St. Andrew School is partnering with School Store (SchoolStore.com) to provide a great avenue for our families to shop online with over 300 major chains and help the school at the same time! This is how it works: St. Andrew School receives a percentage of the purchases our families and their friends make online with the companies on the School Store website. It is that simple. But it gets even better! We want our families to enjoy the benefits of their shopping too, so **St. Andrew School will apply 40% of a family's earned revenue from their purchases toward their tuition next year!**

If you have any questions please call Deirdre Teodosio at the school or email her at [auction@standrewschool.org](mailto:auction@standrewschool.org).



**Did you know that when you shop at Amazon, you could also be raising money for our school? All you have to do is go to this link <http://smile.amazon.com/ch/81-0506955> and sign in as you normally would. Amazon donates 0.5 % of the sale to St. Andrew School. It is that easy.**

\* \* \* \* \*

## Big Sky Scholarships

In 2015, the legislature passed Montana's first law specifically designed to give parents access to funding to find the best school for their student. This program offers dollar-for-dollar tax credit on your Montana taxes for up to \$150 per person (\$300 per couple). You are still entitled to claim a charitable deduction for donations above \$150 (\$300 per couple). The entire amount of any donation is eligible for the federal charitable deduction. St. Andrew School is an affiliate of the Big Sky Scholarship foundations. Parents may request that donations to this organization be directed to the St. Andrew School Scholarship program. Please call Donna Smillie (406-449-3201) if you would like to know more about how you can make a \$150-\$300 donation to help students attend St. Andrew and receive 100% credit for it on your taxes.

### Expected School-wide Learning Results

**St. Andrew students are: VERO- Virtuous Citizens Enthusiastic Catholics Resourceful Learners Open Witnesses**

**PLEASE REMEMBER THAT YOUR DONATION TO ST. ANDREW SCHOOL IS TAX DEDUCTIBLE.**