

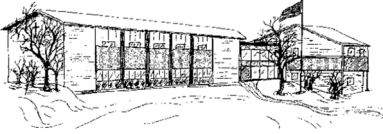
# St. Andrew School Newsletter

April 4, 2017

P.O. Box 231 Helena, Montana 59624 1900 Flowerree Street Helena, Montana 59601

406- 449-3201(Phone) 406-449-0129 (Fax)

[www.standrewschool.org](http://www.standrewschool.org)



## Looking Ahead:

- |            |   |
|------------|---|
| Apr. 5     | Enrollment Begins (Renweb)  |
| Apr. 5     | Ice Cream Sale, Student Government fundraiser                         |
| Apr. 5     | Orchestra Recitals at St. Andrew <b>(please see correction below)</b> |
| Apr. 6     | Orchestra Recitals at St. Andrew <b>(please see correction below)</b> |
| Apr. 7     | Return CRS Rice Bowls   |
| Apr. 13    | Good Friday, NO SCHOOL  |
| Apr. 13    | <b>ACE New and Returning Students Scholarship forms due</b>           |
| Apr. 13    | <b>Enrollment Applications Due</b>                                    |
| Apr. 14    | Easter Monday, NO SCHOOL  |
| Apr. 18    | Youth Electrum at Holter (for winners of St. A art show)              |
| April 20   | Gr. K-7 Walk-a-thon and play at Carroll College Theatre               |
| April 20   | Gr. K-7 <b>Parents pick up and drop off at Carroll's PE center!</b>   |
| Apr. 24-27 | Gr. 2-10, Iowa Basics   |

## Ongoing Weekly Extracurricular Activities:

Monday	Tuesday	Wednesday	Thursday	Friday
Homework Club 3:00-4:15 MS Bike Club 3:00	Homework Club 3:00-4:15	Homework Club 3:00-4:15	Homework Club 3:00-4:15	HS Bike Club 3:00



**Families are welcome to join the students and faculty at Stations of the Cross, Friday, Apr. 7<sup>th</sup> at 2:40 in the gym.**

## Expected School-wide Learning Results

**St. Andrew students are: VERO- Virtuous Citizens Enthusiastic Catholics Resourceful Learners Open Witnesses**

PLEASE REMEMBER THAT YOUR DONATION TO ST. ANDREW SCHOOL IS TAX DEDUCTIBLE.

## Enrollment for 2016-17 Has Begun!

Last year St. Andrew began an online enrollment system through RenWeb. Since you enrolled last year, all your information should still be in the system and enrollment will be easier than ever. In addition, you will be able to view your own information at any time and update information whenever something changes and it will be immediately available to the school.

### Re-Enrollment

Please note that RenWeb charges a \$10 fee for online enrollment which will not be returned to the school. As in the past, St. Andrew will charge \$100 for returning families. This non-refundable fee will be credited towards your child's annual (book) fee.

### How to Enroll:

- Please go to [www.renweb.com](http://www.renweb.com)
- Select Logins from the menu bar and ParentsWeb Login from the drop-down menu.
- Type in your username and password. If you have forgotten your username or password, please click on the link provided.
- After logging in, click on the **Family Information** button in the left menu.
- Click on the **Enrollment/Reenrollment** button.

Our Online Enrollment system will open with a link to the enrollment packet for your child. The online process should take approximately 15 minutes to complete. Your information will be saved if you need to quit and come back later. The Instructions and Enrollment Checklist page of the enrollment packet contains supplemental enrollment forms that also must be submitted. Further instructions on these forms are provided online.

To complete our online reenrollment process, you will access our ParentsWeb through your existing login. If you do not have a login, please follow the [Instructions for Creating a ParentsWeb Login](#) listed below.

If you have a new Kindergarten student coming into the school, we will call you to help you to enroll them.

### Immunizations;

You need not fill in anything to do with immunizations unless you have a Kindergarten or 7<sup>th</sup> grade student. Parents with students in these grades may upload these documents if they wish or just ask their doctor's office to Fax these to the school.

### Tuition Payments:

Parents have the option of paying tuition online by using an e-check or credit card. If you prefer to write a check or use ACH, that is still an option.

Please have your enrollment forms completed as soon as possible. Some of our classes are already full and we will be starting waiting lists. Current students have priority placement. Even if you are a returning family, **it is important that we have your enrollment forms returned by April 13th.**

### Expected School-wide Learning Results

St. Andrew students are: **VERO-** Virtuous Citizens **E**nthusiastic Catholics **R**esourceful Learners **O**pen Witnesses

PLEASE REMEMBER THAT YOUR DONATION TO ST. ANDREW SCHOOL IS TAX DEDUCTIBLE.

## Enrollment Costs

The following is the tuition schedule for the 2017-18 school year:

First Child.....	\$4,440/school year (\$444month/ 10 months (Aug--May)
Second Child .....	\$3,320/school year (\$332 month/10 months (Aug--May)
Third Child .....	\$2,550/school year (\$255 month/10 months (Aug--May)

Graduation Fee .....	\$50 Due October 1 of a student's 12 <sup>th</sup> grade year.
First HS Student (9-12): .....	Additional \$400/year (\$40/month (Aug—May)
Additional Siblings in HS.....	No Additional Fee

Every student pays the Annual Fee:

\$245.....	If postmarked or paid by June 15, 2017
\$275.....	If postmarked or paid by July 15, 2017
\$295.....	Due August 1, 2017

Non-refundable deposit: \$245.00 per new family and

Non-refundable deposit: \$100.00 per returning family.

In either case, the deposit must accompany the Online Enrollment Agreement and is applied toward the Annual Fee.

Additional Fees;

Online Application Fee for New Students: \$20

Online Re-enrollment fee for Returning Students: \$10

### Financial Aid

Financial aid is available on an as-needed basis. There are two sources of aid available:

**St. Andrew School Financial Aid:** Applications will be available through RenWeb starting April 21. See information below. These **must be submitted by April 28, 2017.**

**ACE Scholarships:** ACE Scholarships is a Denver, Colorado non-profit organization. They provide partial tuition scholarships to low-income children in grades K-12 through charitable contributions from private citizens, corporations and foundations. Their website is [www.acescholarships.org](http://www.acescholarships.org). This website provides information only. To obtain and ACE application, please visit the school office. **These applications must be completed and returned to the office by April 15<sup>th</sup>, 2017.**

**Big Sky Scholarships:** Application forms are available in the school office.

## ACE Scholarships

**ACE Scholarships** is a Denver, Colorado non-profit organization. Their focus is on scholarships and school choice programs. They provide partial tuition scholarships to K-12<sup>th</sup> grade students whose families qualify based on income, through charitable contributions from private citizens, corporations and foundations. Their website is [www.acescholarships.org](http://www.acescholarships.org). This website provides information only.

### Expected School-wide Learning Results

**St. Andrew students are: VERO- Virtuous Citizens Enthusiastic Catholics Resourceful Learners Open Witnesses**

PLEASE REMEMBER THAT YOUR DONATION TO ST. ANDREW SCHOOL IS TAX DEDUCTIBLE.

**New ACE Applications** are available in the school office. These applications must be completed and returned to the office by **April 15<sup>th</sup>**. There is no guarantee that you will receive a scholarship, but it is a good idea to get your name into the queue in case scholarships open up. 80% of ACE allocations go to students who are either new students from a public school or are incoming kindergarteners and 20% go to students already in private schools.

**Renewing your ACE Applications:** If you received a 2015-16 ACE scholarship, to ensure qualification for your 2016-17, fill out the Renewal Application that you should have received in the mail from ACE and return to the school by **April 15<sup>th</sup>**. The Renewal Application consists of two parts – Contact Information and Income Information. Please review and complete both pages to ensure you still qualify for the scholarship.

#### Contact Information

Verify the contact information and indicate any changes necessary.

#### 2015 Income Information

Please complete this entire form. Also attach the first two pages of your 2015 1040A or EZ forms (If you own a business, please attach a copy of the appropriate form for your type of business.) Include a supplemental letter with your financial statements if there have been any significant changes in your financial circumstances since your 2015 taxes were filed or if there is any other information you would like us to know.

Please submit the COMPLETED Renewal Application along with your 2015 1040A or EZ Tax Return and any other forms or letters needed to Denise Hampton at St. Andrew School by **April 15<sup>th</sup>**



## Orchestra Recitals

Parents, please join us for orchestra recitals. These will be held in the gym.

### **CORRECTION:**

Wednesday, April 5<sup>th</sup>

1:35, First Year Orchestra

2:10, MS Orchestra

Thursday, April 6<sup>th</sup>

1:35, Second Year Orchestra

2:15, HS Orchestra (Grades 8-12)



## CRS Rice Bowl

Students were given boxes for the CRS Rice Bowl project. The money that is donated goes to Catholic Relief Services to feed the poor. Please encourage your children to think of those less fortunate than themselves and to make a sacrifice for them. The boxes will be due back in the school office on **Friday, April 7<sup>th</sup>**.

## State Science Fair Results

**Congratulations to the following students who took their Science projects to Missoula to compete against other Montana students; each of our students received a ribbon.**

**Ethan Melton- Bronze**

**Jason Buffington-Silver**

**Chris Szpilka-Gold**

**Katie Lee McLaughlin-Silver**

**Rebecca Smillie-Silver**

**Daniel Cole-Bronze**

## Expected School-wide Learning Results

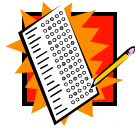
**St. Andrew students are: VERO- Virtuous Citizens Enthusiastic Catholics Resourceful Learners Open Witnesses**

**PLEASE REMEMBER THAT YOUR DONATION TO ST. ANDREW SCHOOL IS TAX DEDUCTIBLE.**

**The Parent Communication Committee** has created a survey to assess current communication methods with parents. .

If your family has not already done so, please go to <https://goo.gl/forms/lgA9nmWFKtj0z0l52> and take 5-10 minutes to complete the anonymous survey, we would appreciate it.

**The survey will close on April 10**, so please respond this week if you have an opinion (or suggestion) about communication methods, including RenWeb usage. Thanks to everyone who has already responded; we'll start processing the results next week!



## Attention Junior Students!

### When's the Best Time to Take the SAT?

The SAT and other College Board tests are offered several times a year. Most students take the SAT for the first time during the spring of their junior year and a second time during the fall of their senior year.

**SAT Test Date:**

**May 6**

**June 3**

**Registration Deadline:**

**April 7**

**May 9**

**Late Registration Deadline:**

**April 25**

**May 24**

**ART  
FAIR**



**2017**

**CORRECTION:** Elizabeth Scheuer in Kindergarten won a 1<sup>st</sup> place ribbon

**Box Tops and Labels for Education** CONGRATULATIONS to the K/1st classrooms that collected and earned the most for our school through the Box Tops and Labels for Education programs this year!! The class will receive a \$100 Costco card (donated by a generous, anonymous parent) and an ice cream party for all of their clipping and submitting! Way to go and thank you!

Also, thank you to all of our parents and volunteers who worked together this year to raise a total of \$571.90 for our school through Box Tops and earn 1,617 Labels for Education points. These totals will be used to purchase much needed supplies for our school.

While the Labels for Education program is winding down this year, don't forget to keep collecting Labels and, especially, Box Tops through the rest of the year and over the summer to make next year's earnings even bigger!

### Expected School-wide Learning Results

**St. Andrew students are: VERO- Virtuous Citizens Enthusiastic Catholics Resourceful Learners Open Witnesses**

**PLEASE REMEMBER THAT YOUR DONATION TO ST. ANDREW SCHOOL IS TAX DEDUCTIBLE.**

## Walk-A-Thon for a New Playground

On Thursday, April 20 the Kindergarten through seventh grade will participate in a **Walk-A-Thon** to raise money for new playground equipment. This promises to be a fun day to get some outdoor time! The playground committee's goal is to raise enough money to buy a piece of equipment and have it installed this summer.

**Where:** Carroll College's Football Stadium (off Benton)

**Time:** 8:00 am- **Please drop your children off in front of Carroll's PE center. Teachers will be in front of the PE center to check students in.**

**What to Bring:** A lunch, water bottle, good running shoes, and layers of clothing in case it is chilly

**Schedule:**

**8:00** Drop your child off in front of the PE center

**8:30-12:00** Walk-a-thon and activities in the football stadium

**12:00** Lunch

**1:00-2:30** Carroll College Play

**2:45** Parents pick up in front of the Carroll PE center

**2:45 PM Pick-Up procedure for day of the Walk-A-Thon:**

**Park at the Carroll PE Center. Check out your child with the teacher. Teachers will need to see you before they allow your child to leave.**

A **pledge form** is attached to this newsletter (more can be obtained from your child's teacher). Students are not required to get pledges, but will be expected to participate in the day's events. Please let your child's teacher know if you can help.

An **email letter** to send to friends and family is also available. (See suggestions below.)

### Important Dates for Walk-A-Thon

**April 4:** Begin asking for pledges

**April 19:** Close out your pledges

**April 20:** Day of Walk-A-Thon (Drop off/Pick up students in front of Carroll College PE Center)

**May 4:** Money and pledge form turned in to school.



**Prizes for most pledge money collected:**

**1<sup>st</sup> place: \$100**

**2<sup>nd</sup> place: \$50**

**3<sup>rd</sup> place: \$25**

**Here are some suggestions for how to maximize your sponsorship donations:**

- a) *Email*-We have sent you an email with an attachment (see reverse side for an example). You can copy, paste and edit this form directly into the body of an email. **Send to family and friends all over the country.**
- b) Make a video with your smart phone of your child asking for sponsorship for the walk-a-thon and text that to family and friends.
- c) Call them on the phone-everyone loves to get a phone call from a loved one and everyone would love to help their special someone achieve a goal!
- d) Visit the neighbors who you know would get a kick out of helping your child raise money for a new playground.

### **Expected School-wide Learning Results**

**St. Andrew students are: VERO- Virtuous Citizens Enthusiastic Catholics Resourceful Learners Open Witnesses**

**PLEASE REMEMBER THAT YOUR DONATION TO ST. ANDREW SCHOOL IS TAX DEDUCTIBLE.**

# ST. ANDREW SCHOOL



April 4, 2017

Dear (type name here),

I am writing to ask if you would be willing to sponsor me in my school's walk-a-thon which will take place on April 20 at Carroll College's football stadium. I am very excited to be a part of this campaign to raise money so our school can buy playground equipment.

I hope to walk at least (type number here) laps. (One lap= 1/5<sup>th</sup> of a mile)

Suggested amounts:

\$ .50 a lap

\$ 1.00 a lap

\$ 2.00 a lap

Other (please specify)

I am hoping to win a prize for the most money collected from sponsors.

1<sup>st</sup> place is \$100 2<sup>nd</sup> place is \$50 3<sup>rd</sup> place is \$25

If you wish to make a donation, you may do so on our school's

website: [www.standrewschool.org](http://www.standrewschool.org) (Please let me know if you do this so I can get credit)

You may also make a check out to St. Andrew School and send it to me.

My address is (type address here)

Thank you so much for supporting our school and giving me a place to play! Please remember that we pray for all of our benefactors!

(Choose your closing),

(Type your student's name)

## Expected School-wide Learning Results

St. Andrew students are: **VERO-** Virtuous Citizens Enthusiastic Catholics Resourceful Learners Open Witnesses

PLEASE REMEMBER THAT YOUR DONATION TO ST. ANDREW SCHOOL IS TAX DEDUCTIBLE.