

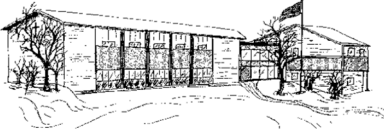
St. Andrew School Newsletter

March 28, 2017

P.O. Box 231 Helena, Montana 59624 1900 Flowerree Street Helena, Montana 59601

406- 449-3201 (Phone) 406-449-0129 (Fax)

www.standrewschool.org

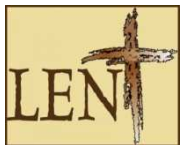


Looking Ahead:

Mar. 29	End of Quarter
Mar. 30	Early dismissal, 11:45, Teachers' meeting
Mar. 31	Report cards
Apr. 5	Ice Cream Sale, Student Government fundraiser
Apr. 5	Orchestra Recitals at St. Andrew
Apr. 6	Orchestra Recitals at St. Andrew
Apr. 14	Good Friday, NO SCHOOL
Apr. 17	Easter Monday, NO SCHOOL
Apr. 18	Youth Electrum at Holter (for winners of St. A art show)
Apr. 20	Gr. K-7, play, "The Big Magic", at Carroll College Theatre
Apr. 24-27	Gr. 2-10, Iowa Basics
Apr. 27	Early dismissal, 11:45, Teachers' meeting

Ongoing Weekly Extracurricular Activities:

Monday	Tuesday	Wednesday	Thursday	Friday
Homework Club 3:00-4:15	Homework Club 3:00-4:15	Homework Club 3:00-4:15	Homework Club 3:00-4:15	



Families are welcome to join the students and faculty at Stations of the Cross on Fridays, Mar. 31st and Apr. 7th at 2:40 in the gym.

Expected School-wide Learning Results

St. Andrew students are: **VERO-** Virtuous Citizens **E**nthusiastic Catholics **R**esourceful Learners **O**pen Witnesses

PLEASE REMEMBER THAT YOUR DONATION TO ST. ANDREW SCHOOL IS TAX DEDUCTIBLE.

The Parent Communication Committee has created a survey to assess current communication methods with parents. We welcome your feedback concerning how St. Andrew School communicates with parents currently and how we can improve.

If your family has not already done so, please go to <https://goo.gl/forms/lgA9nmWFKtj0z0l52> and take 5-10 minutes to complete the anonymous survey, we would appreciate it.

Parents who are interested in joining the Parent Communication Committee, please call the school office to let us know.



Orchestra Recitals

Parents, please join us for orchestra recitals. These will be held in the gym.

Wednesday, April 5th

1:35, First Year Orchestra
2:15, Second Year Orchestra

Thursday, April 6th

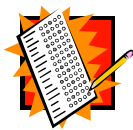
1:35, HS Orchestra (Grades 8-12)
2:10, MS Orchestra



Bike Club



Any 3rd - 12th grade students interested in joining a Bike Club should meet with Mr. Howes in his classroom after school next Tuesday, March 28th, for more information. If different age groups are interested, Mr. Howes will plan rides for each group accordingly on different days.



Attention Junior Students!

When's the Best Time to Take the SAT?

The SAT and other College Board tests are offered several times a year. Most students take the SAT for the first time during the spring of their junior year and a second time during the fall of their senior year.

SAT Test Date:	Registration Deadline:	Late Registration Deadline:
May 6	April 7	April 25
June 3	May 9	May 24

Expected School-wide Learning Results

St. Andrew students are: **VERO-** Virtuous Citizens **E**nthusiastic Catholics **R**esourceful Learners **O**pen Witnesses

PLEASE REMEMBER THAT YOUR DONATION TO ST. ANDREW SCHOOL IS TAX DEDUCTIBLE.



Kindergarten Round-up

If you have a child who will be five years of age by September 1st please call the office to schedule your appointment. Families, it is **very important** that we be made aware of younger siblings entering kindergarten as the class is filling up! Although existing families have first priority, your deposit secures your spot.

ALSO... it is not too early to make an appointment to have your child's vaccination updated. The State of Montana requires children about to enter Kindergarten to have received 2 doses of MMR, 2 doses of Varicella vaccine, 3 doses of Polio vaccine and at least 1 dose after the 4th birthday, and 4 doses of DTP/DT/DTap/Td (1 dose after the 4th birthday). Your doctor's office can fax the vaccination record to us at 449-0129. Records should be in the school office before school starts in August.

40 Days for Life

From **March 1 through April 9**, you're invited to join other Christians for 40 Days for Life – 40 days of prayer and fasting for an end to abortion. If you would like to volunteer to help, please contact: Sarah Leslie 461-4776 or helena40df@gmail.com. For detailed information on 40 Days for Life or to sign up to pray, check out the website: 40daysforlife.com/Helena

6th grade parents...

it is not too early to make an appointment to have your child's vaccination updated. The State of Montana requires children about to enter 7th grade to have received a Tdap booster which protects against tetanus, diphtheria, and pertussis (whooping cough). These records should be in the school office BEFORE school begins in the fall.

**PLEASE ASK YOUR CARE PROVIDER
TO FAX THE RECORDS TO US AT 449-0129**



CRS Rice Bowl

Students were given boxes for the CRS Rice Bowl project. The money that is donated goes to Catholic Relief Services to feed the poor. Please encourage your children to think of those less fortunate than themselves and to make a sacrifice for them. The boxes will be due back in the school office on **Friday, April 7th**.

Expected School-wide Learning Results

St. Andrew students are: VERO- Virtuous Citizens Enthusiastic Catholics Resourceful Learners Open Witnesses

PLEASE REMEMBER THAT YOUR DONATION TO ST. ANDREW SCHOOL IS TAX DEDUCTIBLE.

**ART.
FAIR**



2017

Congratulations to the following prize winners! Well done!

K-1

- 1st Claire Havens
- 1st Lada Grover
- 1st Matthias Ahmann
- 1st Stella Iverson
- 2nd Maia Maganito
- 2nd Elizabeth Scheuer
- 2nd Sophia Clark
- 2nd Ambrose Randash

2nd Grade

- 1st Tucker Schmitt
- 1st Hope Farley
- 2nd Sophie Clark
- 2nd Peter Teodosio

3rd Grade

- 1st Preston Clark
- 1st AlizaJane Sark
- 2nd Elina Maganito
- 2nd Morgan Miller

4th Grade

- 1st Andy Dietz
- 1st Mia Melton
- 2nd Mia Carrell
- 2nd Andy Harris
- 2nd Abby Carney

5th Grade

- 1st Grace Mattern
- 1st Kelly Quinn
- 2nd Lyla Ackerman
- 2nd Abby Carney

6th Grade

- 1st Maren Elliott
- 1st Maren Elliott
- 2nd Kevin LaChere
- 2nd Jeremiah Tappan

7th Grade

- 1st KatieLee McLaughlin
- 1st Emma Randash
- 2nd KatieLee McLaughlin
- 2nd Lucy Lantz

8th Grade

- 1st Isabel Rausch
- 1st Nathan McLeod
- 1st Jared Nelson
- 2nd Jason Buffington
- 2nd Chris Szpilka

High School

- 1st Anna Hampton
- 1st MaryRose Nistler
- 1st Cami Field
- 1st Jase Seekel
- 1st Joe Hurlbert
- 2nd Cameron McLeod
- 2nd Blake Ullrey
- 2nd Briar Bell
- 2nd Cami Field
- 2nd MaryRose Nistler



**Ice Cream Sale
Wednesday, April 5th**



Student Council will sell ice cream at lunchtime to benefit the Student Government.
Cost is \$2 per scoop; \$1 for toppings. Cash only.

Expected School-wide Learning Results

St. Andrew students are: VERO- Virtuous Citizens Enthusiastic Catholics Resourceful Learners Open Witnesses

PLEASE REMEMBER THAT YOUR DONATION TO ST. ANDREW SCHOOL IS TAX DEDUCTIBLE.

St. Andrew Talent Show

May 12th

Auditions to be held on April 28, starting at 10:00 AM

Categories: Strings, Pianists, Singers, Dance, Magic, Class/Group

The seniors will call students up to the gymnasium to audition by grade.

The seniors have been told to limit the number of students in the Talent Show to 25-30 students, so some students may need to keep practicing for next year! The seniors do invite everyone to try out and give it a shot!

The senior-created rubric (below) will be used to judge each student's performance as objectively as possible for inclusion in the show.

	score	1 to 2	3 to 4	5 to 6	7 to 8	9 to 10
PREPARATION	/10	Not prepared to audition	Needs practice	Nice, but not quite there yet	You better remember everything for the show!	Mega prepared and organized
TIME LIMIT	/10	Ridiculously over or under time	Rein-it-in	Work on that time a bit, will ya?	Crazy close to perfection	3 minutes-ish
CREATIVITY	/10	. . . like oatmeal without brown sugar	oatmeal with sugar, but forgetting the nuts, raisins, and fruit	Creative.	Creatively spicy	Mind-blowingly creative.
CONFIDENCE	/10	Lacking confidence	Be yourself and don't worry 'bout it!	You're awesome so act like it :)	Uber confident	Ready to take over the world, basically
SKILL	/10	Needs A LOTTA practice	Hone those skills!	Needs a lil' practice there, bud	You rocked our socks off.	So much skill, it's crazy man
TOTAL:						
Total possible points: 50 *Must score above a 35 to be considered						

Expected School-wide Learning Results

St. Andrew students are: VERO- Virtuous Citizens Enthusiastic Catholics Resourceful Learners Open Witnesses

PLEASE REMEMBER THAT YOUR DONATION TO ST. ANDREW SCHOOL IS TAX DEDUCTIBLE.

Indoor Tennis Lessons

Six week sessions are starting April 10 and will go to May 15. Lessons are for students ages 4-7, 8-12, Middle School and High School. Middle School and High School students may join a team and play in tournaments. For more information go online at LCTA, or contact Tom Banks (ptbanks@juno.com) or call 406-439-6938.

PIP

Attention Parents:

Please come into the school and record your PIP points. We cannot know what you have done so far without your input. We have sent reminder letters if you were short according to our records.

Remember that you are required to perform 24 hours of service to the school (per family) and will be billed at the rate of \$20/hr for any hours not fulfilled.

Upcoming PIP opportunities:

- Teacher Appreciation Day Luncheon April 27
- Track meet May 5th
- May Crowning May 12th
- Help with the kitchen, contact Deirdre at 449-3201

Also, please call the office if you can help with any of these:

- Replace vent cover on roof
- Fix drawers on metal cabinet in gym
- Repair downspout to east of main school entrance
- Paint window frames in gym
- Install stair handrail(s) in back stair well
- Paint back stair well wall base
- Reinforce Crow's Nest with plywood
- Repair/replace? window opener in Room 303
- Touch-up paint on kitchen cabinets
- Clean out areas with white rocks, front and back of school

Summer

- Sand and varnish stair handrails (front stairs)
- **Join group to paint the outside trim on the school**

Expected School-wide Learning Results

St. Andrew students are: VERO- Virtuous Citizens Enthusiastic Catholics Resourceful Learners Open Witnesses

PLEASE REMEMBER THAT YOUR DONATION TO ST. ANDREW SCHOOL IS TAX DEDUCTIBLE.

St. Andrew School

Enrollment Costs 2017-18 School Year

Dear Parents/Guardians:

The following is the tuition schedule for the 2017-18 school year:

First Child..... \$4,440/school year (\$444/month/10 months (Aug--May)
Second Child.....\$3,320/school year (\$332 month/10 months (Aug--May)
Third Child.....\$2,550/school year (\$255 month/10 months (Aug--May)

Graduation Fee.....\$50 Due October 1 of a student's 12th grade year.
First HS Student (9-12): ...Additional \$400/year (\$40/month (Aug—May)
Additional Siblings in HS..No Additional Fee

Every student pays the Annual Fee:

\$245If postmarked or paid by June 15, 2017
\$275If postmarked or paid by July 15, 2017
\$295Due August 1, 2017

Non-refundable deposit: \$245.00 per new family and

Non-refundable deposit: \$100.00 per returning family.

In either case, the deposit must accompany the Online Enrollment Agreement and is applied toward the Annual Fee.

Additional Fees;

Online Application Fee for New Students: \$20

Online Re-enrollment fee for Returning Students: \$10

Financial Aid

Financial aid is available on an as-needed basis.

St. Andrew School Financial Aid: Applications will be available in two weeks on our website.

ACE Scholarships: ACE Scholarships is a Denver, Colorado non-profit organization. They provide partial tuition scholarships to low-income children in grades K-12 through charitable contributions from private citizens, corporations and foundations. Their website is www.acescholarships.org. This website provides information only. To obtain an ACE application, please visit the school office. **These applications must be completed and returned to the office by April 13th, 2017.**

(See more information on next page.)

Expected School-wide Learning Results

St. Andrew students are: VERO- Virtuous Citizens Enthusiastic Catholics Resourceful Learners Open Witnesses

PLEASE REMEMBER THAT YOUR DONATION TO ST. ANDREW SCHOOL IS TAX DEDUCTIBLE.

ACE Scholarships

ACE Scholarships is a Denver, Colorado non-profit organization. Their focus is on scholarships and school choice programs. They provide partial tuition scholarships to K-12th grade students whose families qualify based on income, through charitable contributions from private citizens, corporations and foundations. Their website is www.acescholarships.org. This website provides information only.

New ACE Applications are available in the school office. These applications must be completed and returned to the office by **April 13th**. There is no guarantee that you will receive a scholarship, but it is a good idea to get your name into the queue in case scholarships open up. 80% of ACE allocations go to students who are either new students from a public school or are incoming kindergarteners and 20% go to students already in private schools.

Renewing your ACE Applications: If you received a 2016-17 ACE scholarship, to ensure qualification for your 2017-18, fill out the Renewal Application that you should have received in the mail from ACE and return to the school by **April 13th**. The Renewal Application consists of two parts – Contact Information and Income Information. Please review and complete both pages to ensure you still qualify for the scholarship.

Contact Information

Verify the contact information and indicate any changes necessary.

2015 Income Information

Please complete this entire form. Also attach the first two pages of your 2016 1040A or EZ forms (If you own a business, please attach a copy of the appropriate form for your type of business.) Include a supplemental letter with your financial statements if there have been any significant changes in your financial circumstances since your 2015 taxes were filed or if there is any other information you would like us to know.

Please submit the COMPLETED Renewal Application along with your 2016 1040A or EZ Tax Return and any other forms or letters needed to Denise Hampton at St. Andrew School by **April 13th**.

Expected School-wide Learning Results

St. Andrew students are: **VERO-** Virtuous Citizens **E**nthusiastic Catholics **R**esourceful Learners **O**pen Witnesses

PLEASE REMEMBER THAT YOUR DONATION TO ST. ANDREW SCHOOL IS TAX DEDUCTIBLE.

Big Sky Scholarships

In 2015, the legislature passed Montana's first law specifically designed to give parents access to funding to find the best school for their student. This program offers dollar-for-dollar tax credit on your Montana taxes for up to \$150 per person (\$300 per couple). You are still entitled to claim a charitable deduction for donations above \$150 (\$300 per couple). The entire amount of any donation is eligible for the federal charitable deduction. St. Andrew School is an affiliate of the Big Sky Scholarship foundations. Parents may request that donations to this organization be directed to the St. Andrew School Scholarship program. Please call Donna Smillie (406-449-3201) if you would like to know more about how you can make a \$150-\$300 donation to help students attend St. Andrew and receive 100% credit for it on your taxes.

* * * * *

The School Store!

St. Andrew School is partnering with School Store (SchoolStore.com) to provide a great avenue for our families to shop online with over 300 major chains and help the school at the same time! This is how it works: St. Andrew School receives a percentage of the purchases our families and their friends make online with the companies on the School Store website. It is that simple

We want our families to enjoy the benefits of their shopping, too, so **St. Andrew School will apply 40% of a family's earned revenue from their purchases toward their tuition next year!**

If you have questions please call Deirdre Teodosio at the school or email her at auction@standrewschool.org.

* * * * *



Did you know that when you shop at Amazon, you could also be raising money for our school? All you have to do is go to this link <http://smile.amazon.com/ch/81-0506955> and sign in as you normally would. Amazon donates 0.5 % of the sale to St. Andrew School. It is that easy.

Expected School-wide Learning Results

St. Andrew students are: VERO- Virtuous Citizens Enthusiastic Catholics Resourceful Learners Open Witnesses

PLEASE REMEMBER THAT YOUR DONATION TO ST. ANDREW SCHOOL IS TAX DEDUCTIBLE.