

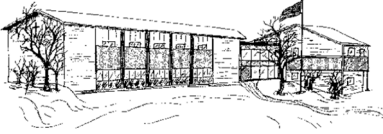
# St. Andrew School Newsletter

February 7, 2017

P.O. Box 231 Helena, Montana 59624 1900 Flowerree Street Helena, Montana 59601

406- 449-3201(Phone) 406-449-0129 (Fax)

[www.standrewschool.org](http://www.standrewschool.org)



## Looking Ahead:

Feb. 8	Math Counts competition in Great Falls
Feb. 9	Early release, 11:45, Teachers' meeting
Feb. 10	Last Ski Day
Feb. 11	Virtus Training, more information below
Feb. 15	School Spelling Bee, grades 6-8
Feb. 24	County Spelling Bee
Feb. 24	Gr. 7-8 Legislature Day at the Capitol
Feb. 25	<b><i>Emerald Isle Auction</i></b>
Feb. 28	Student Council Ice Cream Sale Fundraiser
Mar. 1	<b>Ash Wednesday, late start 8:15</b>
Mar. 6-10	Spring Break
Mar. 15	Kindergarten interviews
Mar. 15	Helena Symphony, 1:00
Mar. 16	Science Fair
Mar. 21	Orchestra Fest, 8-11
Mar. 22	Options, gr. 11-12
Mar. 23	Art Show

## Ongoing Weekly Extracurricular Activities:

Monday	Tuesday	Wednesday	Thursday	Friday
Homework Club 3:00-4:15 Jr. High Girls BB 3:05-4:15	Homework Club 3:00- 4:15 HS Boys BB 3:00-5:00	Homework Club 3:00-4:15 Jr. High Girls BB 3:05-4:15	Homework Club 3:00-4:15 HS Boys BB 3:00-5:00	

## NO HOMEWORK CLUB FEB. 13-16

See Sports game schedules and other dates of interest in following pages

## Expected School-wide Learning Results

St. Andrew students are: **VERO-** Virtuous Citizens **E**nthusiastic Catholics **R**esourceful Learners **O**pen Witnesses

PLEASE REMEMBER THAT YOUR DONATION TO ST. ANDREW SCHOOL IS TAX DEDUCTIBLE.

## Catholic Students Legislature Days

Feb. 24: 7-8<sup>th</sup> grade students will take a field trip to the Capitol for Catholic Student Legislature Days

### Parent Volunteers – VIRTUS Training – Sat., Feb. 11

Parents who will be working with students on a regular basis need to take a VIRTUS class. This includes classroom aides, coaches, parking lot aides, etc. You MUST pre-register for the class. There is registration on-site. You MUST be on time for class; latecomers will not be allowed in. Those who attend MUST be present for the entire class. There can be no exceptions.

#### Virtus Training – Protecting God’s Children for Adults

**When:** Saturday, February 11, 10:00

**Where:** St. Andrew School, Mr. Petesch's Room (301)

**Sign Up:** <https://www.virtusonline.org/virtus>

Choose First time registrant shown on the left side of screen

Sign up for the St Andrew School class offered

### Senior Class Graduation Information

- Due to requests from parents, the date for the senior class graduation has changed to Friday, May 19, 2017.
- Graduation Announcements: The school is able to provide 25 announcements with personalized name cards to each family of a graduate. Please contact the office by February 15<sup>th</sup> to let us know whether you would like us to provide you with these. Additional announcements with name cards can be ordered for \$1.40 per set.

We will need the name of the graduate exactly as you wish it to appear on the name card. We will deliver them to the students by March 1<sup>st</sup>. Samples are available in the office for your viewing.

- Senior Pictures are due February 15. Pictures must be 2¼ x 3". Orientation of pictures must be portrait not landscape.
- 

### 6<sup>th</sup> grade parents

The State of Montana requires children about to enter 7<sup>th</sup> grade to have received a Tdap booster. Your doctor’s office can fax records to 449-0129. **Please don’t wait until school starts in August.**

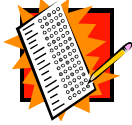
### Expected School-wide Learning Results

St. Andrew students are: **VERO-** Virtuous Citizens **E**nthusiastic Catholics **R**esourceful Learners **O**pen Witnesses

PLEASE REMEMBER THAT YOUR DONATION TO ST. ANDREW SCHOOL IS TAX DEDUCTIBLE.

## 7<sup>th</sup> and 8<sup>th</sup> grade students

If you are a student in grade 7 or 8 who would like to earn money babysitting on Auction Night, please let the office know. Many parents would like to attend or work the auction and need reliable sitters. (The high school students will be working at the auction.)<sup>3</sup>



## Attention Juniors!

### When's the Best Time to Take the SAT?

The SAT and other College Board tests are offered several times a year. Most students take the SAT for the first time during the spring of their junior year and a second time during the fall of their senior year.

#### SAT Test Date:

March 11\*  
May 6  
June 3

#### Registration Deadline:

Feb 10  
Apr 7  
May 9

\*No SAT subject tests



## Kindergarten Round-up

New families are calling the school to enroll their children in Kindergarten for next fall. If you have a child who will be five years of age by September 1<sup>st</sup> please call the office to schedule your appointment. Families, it is **very important** that we be made aware of younger siblings entering kindergarten as the class is filling up! Although existing families have first priority, your deposit secures your spot.

ALSO... it is not too early to make an appointment to have your child's vaccination updated. The State of Montana **requires** children about to enter Kindergarten to have received 2 doses of MMR, 2 doses of Varicella vaccine, 3 doses of Polio vaccine and at least 1 dose after the 4<sup>th</sup> birthday, and 4 doses of DTP/DT/DTap/Td (1 dose after the 4<sup>th</sup> birthday). Your doctor's office can fax the vaccination record to us at 449-0129. Records should be in the school office before school starts in August.

**LOST** 4-way religious medal on silver chain on Tuesday, January 17<sup>th</sup>. This is a special family gift. If anyone sees it, please return it to the office or to Sommer Nistler.

### Expected School-wide Learning Results

St. Andrew students are: **VERO-** Virtuous Citizens **E**nthusiastic Catholics **R**esourceful Learners **O**pen Witnesses

PLEASE REMEMBER THAT YOUR DONATION TO ST. ANDREW SCHOOL IS TAX DEDUCTIBLE.

# Upcoming Games

Jr. High Girls Basketball:	
Saturday, Feb. 11, tournament at ?? Tuesday, Feb. 14, Helena Christian at St. Andrew, 4:00	Tuesday, Feb. 21, at Boulder, 5:00
HS Boys Basketball:	
Friday, Feb. 10, Great Falls Bulldogs at Great Falls Rec. Center, 6:00	

## BIG SKY FIT KIDS

Is a three month physical activity and nutrition program of the Big Sky State Games for students in Grades K-5 to encourage them in healthy living. Students participate in a wide variety of topics related to health and physical activity. Mrs. Birnel will help students keep track of their activity at school and parents will help keep track of their activity and nutrition records at home on their individual log sheets.

Each team that submits their miles for all three months during the three month program will qualify to be included in a drawing for one of three \$500 awards to be presented to the school or organization the team represents. Team members will be encouraged to perform at their own pace.

Our goal is to help each participant strive for and recognize gains in his or her fitness level. The program follows the Centers for Disease Control and Prevention (CDC) recommendation that youth participate in at least 60 minutes of age appropriate and developmentally appropriate physical activity from a variety of activities on all, or most, days of the week.

If you have any questions or would like to have further information about this program, please contact Mrs. Birnel at **406-202-0954** or **sbirnel@standrewschool.org** or go to [www.shapeupmontana.org](http://www.shapeupmontana.org).

## 40 Days for Life

From **March 1 through April 9**, you're invited to join other Christians for 40 Days for Life – 40 days of prayer and fasting for an end to abortion. You're also invited to stand and peacefully pray during a 40-day vigil in the public right-of-way outside Planned Parenthood (1500 Cannon St.), and also to help spread the word about this important community outreach. If you would like to volunteer to help, please contact: Sarah Leslie 461-4776 or [helena40dfl@gmail.com](mailto:helena40dfl@gmail.com). For detailed information on 40 days for life or to sign up to pray, check out the website: **[40daysforlife.com/Helena](http://40daysforlife.com/Helena)**

**SAVE THE DATE: Opening Event: Tuesday, February 28, 6-7pm** at the Carroll College Community Center (The Lower Cube)

## Expected School-wide Learning Results

**St. Andrew students are: VERO- Virtuous Citizens Enthusiastic Catholics Resourceful Learners Open Witnesses**

PLEASE REMEMBER THAT YOUR DONATION TO ST. ANDREW SCHOOL IS TAX DEDUCTIBLE.

## SKI DAY Feb. 10th

- Changes can be accepted up until the Wednesday before the ski day.
- ALL questions, changes, or cancellations need to go through the school and our school coordinator, Sarah Birnel. DO NOT CALL GREAT DIVIDE UNLESS TO CANCEL A RENTAL ON THE SKI DAY. You do not need to call anyone to cancel a lift ticket.
- **Great Divide WILL charge \$5 for rentals that are not picked up and not cancelled by 10:00am on the ski day**
- All students in grades 3-12 are allowed to go to the ski hill without an adult accompanying them. Students in grades K-2 need to be accompanied by a parent or responsible adult that will stay on the hill with them for the day.
- Some of the teachers may also be skiing. It is not, however, their job to take care of your child. If you feel your child needs supervision and is in grades 3-12, you must have an adult at the ski area to take care of their needs. Lunch will not be provided, so everyone is responsible for their own meal. You may eat at the lodge or bring your own lunch.
- It is the parents' responsibility to transport their children to and from the ski hill. St. Andrew School will not be providing transportation. The students should be at the ski hill between 9:00 and 9:15 am and will need to be picked up at 3:00 pm.
- Regarding the "Bunny Hill/Backyard." **Anyone who is wearing skis and is on the snow must pay the access fee whether you will be using the lift or not—this also goes for anyone with a child wearing skis who will be staying in the "Backyard" for the whole day.**

## The School Store Is Open For Business!

St. Andrew School is partnering with School Store (SchoolStore.com) to provide a great avenue for our families to shop online with over 300 major chains and help the school at the same time!

St. Andrew School receives a percentage of the purchases our families and their friends make online with the companies on the School Store website.

We want our families to enjoy the benefits of their shopping too, so **St. Andrew School will apply 40% of a family's earned revenue from their purchases toward their tuition next year!**

In addition, your child(ren) can earn terrific prizes for themselves in the process. The prizes in the program are primarily geared to students in Kindergarten through 7<sup>th</sup> grade, however, families with students in any grade are encouraged to participate.

If you have any questions please contact Deirdre Teodosio 449-3201 or [auction@standrewschool.org](mailto:auction@standrewschool.org).  
N.B. Please do not make donations to the School or classrooms through School store.

*Thank you for all you do for the school*

## Expected School-wide Learning Results

St. Andrew students are: **VERO-** Virtuous Citizens Enthusiastic Catholics Resourceful Learners Open Witnesses

PLEASE REMEMBER THAT YOUR DONATION TO ST. ANDREW SCHOOL IS TAX DEDUCTIBLE.



# Emerald Isle Auction 2017



If you can bring empty 2-liter bottles to the Auction Room this week, that would be very helpful.

**HELP NEEDED Saturday, Feb. 18** to get the school extra clean before the auction (9:00 until done; the more workers, the less time it will take) Please call the office if you can help.

<b>Pre-auction cleaning list 2/18</b>
Dust leaves on fake plants and trees in foyer
Dust inside and outside of trophy case on the stairs
Clean handrails
Wash wooden walls in the gym
Organize the gym equipment and fit it in the cabinets
Vacuuming Gym - West End
Vacuuming Gym - East End
Vacuuming Stage
Clean/dust windows and sills in gym
Clean register and water fountain in lobby outside of gym
Clean back stairwell from gym to office

**We will also need help cleaning** the gym on Sunday, February 26<sup>th</sup> in preparation for school the next day. Can you help with that? Email [auction@standrewschool.org](mailto:auction@standrewschool.org).

## Auction Raffle Tickets...

This year there are **prizes for 5 families who sell the most raffle tickets.**

**First prize** is one annual fee waived.

**Second prize** is one half of an annual fee waived.

**Third prize** is a \$50 gift certificate.

**Fourth prize** is a \$25 gift certificate.

**Fifth prize** is a \$10 gift certificate.

All families received two booklets worth \$100 each, which is the minimum they are required to sell. Remember that all tickets must be accounted for; if they get lost or stolen, it is the responsibility of the family that has them checked out to pay for them. Treat them as you would cash!! The auction room becomes extremely busy as we approach the night of the auction. To alleviate confusion in the final weeks before the auction and make tracking easier, please return the books of tickets as you sell them. When turning in ticket stub books please make sure that you have the correct amount of ticket stubs with the full name and address on each stub and make sure the money amount is correct for the stubs that are turned in. **(Each family has a minimum of 4 PIP hours that must be committed to the auction. This does not include time spent selling raffle tickets.)**

## Expected School-wide Learning Results

**St. Andrew students are: VERO- Virtuous Citizens Enthusiastic Catholics Resourceful Learners Open Witnesses**

**PLEASE REMEMBER THAT YOUR DONATION TO ST. ANDREW SCHOOL IS TAX DEDUCTIBLE.**

*Please call the office for one of the following opportunities to sell tickets.*

<b>Van's Thriftway</b>			
Set up by the Deli; bring your own table and sign. Call Sarah at 442-8645 the Friday before the day you plan to sell. It would be great if the family that signed up first for the day would coordinate so that we don't overwhelm Van's.			
Dates:	9:00 AM-11:00 AM	11:00 AM-1:00 PM	1:00 PM-3:00 PM
Saturday 2/11/17	Deirdre Teodosio		
Sunday 2/12/17			
Saturday 2/18/17			
Sunday 2/19/17			

<b>Super 1</b>			
Set up by front doors; bring your own table and sign. Call Lenny or Joe at 442-2348 the Friday before you plan to sell. It would be great if the family that signed up first for the day would coordinate so that we don't overwhelm Super 1.			
Dates:	9:00 AM-11:00 AM	11:00 AM-1:00 PM	1:00 PM-3:00 PM
Saturday 2/11/17			
Sunday 2/12/17			
Saturday 2/18/17			
Sunday 2/19/17			

<b>Churches</b>	
Sts. Cyril & Methodius	Need a family to arrange this with the Church

<b>Carroll BBall Games</b>		
Wear school uniforms and go into the stands before the game, at halftime, or between games. Please be respectful of fans and stay out of the stands while the players are on the court. There will also be a table set up outside the gym and an announcement will be made in the gym.		
Dates:	Women's 5:30 PM	Men's 7:30 PM
Tuesday 2/7/17		
Friday 2/17/17		
Saturday 2/18/17		

### Expected School-wide Learning Results

**St. Andrew students are: VERO- Virtuous Citizens Enthusiastic Catholics Resourceful Learners Open Witnesses**

PLEASE REMEMBER THAT YOUR DONATION TO ST. ANDREW SCHOOL IS TAX DEDUCTIBLE.

Please contact Jenne Caudle to help chair one of the following committees.

(sassysolo@yahoo.com or 202-2391)

Committee		Name	Phone	Email
Reservations/Registration	Chair	Kristen Palmer	274-6917	vinegifts@outlook.com
	Co-Chair	Chris Szpilka	422-4234	cmszpilka@ou.edu
	Co-Chair	<b>BACKUP NEEDED</b>		
Mailing/Thank you	Chair	Kellie Wendt	422-5615	tkw615@yahoo.com
	Co-Chair	<b>NEEDED</b>		
Clean-up/Put away items	Chair	Amy Sark	594-1119/ 465-8008	mamamia4@mt.net
	Co-Chair	<b>NEEDED</b>		
Auction Night Support	Chair	Bill Gowen	431-9196	wcgowen@helenaabstract.com
	Co-Chair	John Palmer	422-4940	jpalmer@valleybankhelena.com
	Co-Chair	<b>BACKUP NEEDED</b>		
Time Keeper		<b>NEEDED</b>		

## Emerald Isle Auction Sponsors

We would like to acknowledge and thank the businesses and St. Andrew families who are Corporate Sponsors for the 2017 auction. Please support these businesses!

It is not too late to become a sponsor for this year's auction. Please call the school for more information.

### Gold Level Sponsors- \$2,500

Ballweber Orthodontics

Grub Stake

Louis, Jeanette and Sara Caissey

### Silver Level Sponsors \$1,000

Big Sky Lawn Care

Big Sky Psychiatry

Bullman's Wood Fired Pizza

Helena Abstract & Title Company

Helena Foot Specialists

Helena Orthodontics

Helena Orthopaedic Clinic

Leon and Amy Sark

Len Lantz and Krista David

Mike and Denise Hampton/Kevin & Ann Marie McDuffie

Bill and Kathy Gowen

Tony and Teresa Quebedeaux

Pete and Maria Hanson

### Expected School-wide Learning Results

St. Andrew students are: **VERO-** Virtuous Citizens **E**nthusiastic Catholics **R**esourceful Learners **O**pen Witnesses

PLEASE REMEMBER THAT YOUR DONATION TO ST. ANDREW SCHOOL IS TAX DEDUCTIBLE.



Lee & Associates  
Northwest Heating and Air Cond.  
Pro Nails  
Stockman Asset Management  
Sullivan Financial Group  
The Investment Group  
Touchmark  
Trinity Books and Gifts  
Wells Fargo Advisors

Tim and Megan Moran  
Hung (Sonny) and Houong (Hannah) Nguyen

Paul and Kathy Maloy, Chris and Michelle Field  
Steve and Rose Nistler  
G.G. Grotbo, Susan Ward and Maureen Batey

### **Bronze Level Sponsors-\$500**

Clark's Plumbing and Heating  
Edward Jones & Co. Tom Kerr  
First Interstate Bank  
Geolex, Inc.  
Heslep Construction, LLC  
KNEH 97.3 Catholic Relevant Radio  
Montana Eye Care

Todd and Ann Clark

### **In Kind Sponsors**

Alliance Neon  
Carroll College  
Chili O'Brien's  
CrossCurrents Fly Shop  
Diamond Dream  
Great Harvest Bakery  
Harvest Cleaning  
Jensen Jewelers  
Josh Elliott Art  
Knights of Columbus  
Melton Dental  
Montana Broom and Brush  
Pioneer Flooring  
Quality Vision Care  
Vanilla Bean Bakery and Cafe  
Van's Thriftway  
WIPFLI LLP CPAs and Consultants

Allison and Josh Elliott

Sean and Jenet Melton

Kevin and Ann Marie McDuffie

Sean and Jenet Melton

### **Expected School-wide Learning Results**

**St. Andrew students are: VERO- Virtuous Citizens Enthusiastic Catholics Resourceful Learners Open Witnesses**

**PLEASE REMEMBER THAT YOUR DONATION TO ST. ANDREW SCHOOL IS TAX DEDUCTIBLE.**

# Save the date

## *St. Andrew School Emerald Isle Auction*

*February 25, 2017*

*4:30 p.m. – 9:30 p.m.*

*Raffle tickets for a trip to Ireland, a \$1,000.00 gas card, or \$500.00 cash*

*Dinner tickets are on sale now!*

*Available by calling 449-3201 or by sending in this form*

### *Hope to see you there!*

-----  
Name: \_\_\_\_\_ Phone: \_\_\_\_\_

E-mail address: \_\_\_\_\_ Mailing address: \_\_\_\_\_

#### Tickets

Dinner tickets are available for \$50/adult or \$450/table of 10.

Raffle tickets are \$5 each or \$20 for 5 tickets.

Number of tickets you would like to purchase: **Dinner:** \_\_\_\_\_ **Raffle:** \_\_\_\_\_  
(Tickets will be mailed to you)

#### Donations

##### ♣ **Individuals**

- Please find enclosed my donation for the amount of \$\_\_\_\_\_.
- Please have someone contact me about planned giving.

##### ♣ **Businesses**

- Please find enclosed my sponsorship in the amount of \$\_\_\_\_\_.
- The contact person for logos & publicity at my office is:

Name \_\_\_\_\_ Phone: \_\_\_\_\_

- Please have someone contact me about sponsorship.

Enclosed Amount: \$\_\_\_\_\_

Please mail your order and/or donation to:  
St. Andrew School  
P.O. Box 231  
Helena, MT 59624

*Thank you for supporting St. Andrew School*  
*Please keep our students, staff, and families in your prayers*

#### **Expected School-wide Learning Results**

**St. Andrew students are: VERO- Virtuous Citizens Enthusiastic Catholics Resourceful Learners Open Witnesses**

PLEASE REMEMBER THAT YOUR DONATION TO ST. ANDREW SCHOOL IS TAX DEDUCTIBLE.